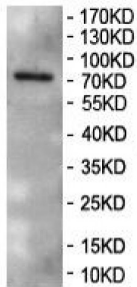
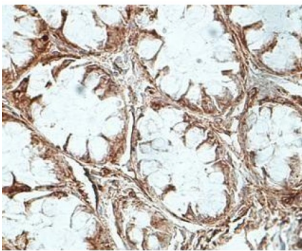


## Receptor Interacting Serine Threonine Kinase 1 (RIPK1) Antibody

Catalogue No.: abx145080



Western blot analysis of HepG2 cell lysates using Receptor Interacting Serine Threonine Kinase 1 (RIPK1) Antibody.



Immunohistochemistry analysis of paraffin-embedded fetal colon using Receptor Interacting Serine Threonine Kinase 1 (RIPK1) Antibody.

Receptor Interacting Serine Threonine Kinase 1 (RIPK1) Antibody is a Rabbit Polyclonal against RIPK1.

<b>Target:</b>	Receptor Interacting Serine Threonine Kinase 1 (RIPK1)
<b>Clonality:</b>	Polyclonal
<b>Reactivity:</b>	Human
<b>Tested Applications:</b>	ELISA, WB, IHC
<b>Host:</b>	Rabbit
<b>Recommended dilutions:</b>	ELISA: 1/20000 - 1/80000, WB: 1/2000 - 1/8000, IHC: 1/100 - 1/200. Optimal dilutions/concentrations should be determined by the end user.
<b>Conjugation:</b>	Unconjugated
<b>Immunogen:</b>	Recombinant fragment corresponding to 17-210 AA of Human RIPK1.
<b>Isotype:</b>	IgG
<b>Form:</b>	Lyophilized
<b>Purification:</b>	Purified by antigen affinity column chromatography.

# Datasheet

Version: 2.0.0

Revision date: 18 Jun 2025



**Reconstitution:** Reconstitute in 100 µl of sterile distilled H<sub>2</sub>O with 50% glycerol.

**Storage:** Store at -20 °C. Avoid repeated freeze/thaw cycles.

**NCBI Accession:** BC126254

**Molecular Weight:** Observed MW: 75 kDa

**Buffer:** Prior to lyophilization: 1% BSA and 0.02% NaN<sub>3</sub>.

**Specificity:** Predicted to react with Mouse and Rat RIPK1.

**Concentration:** Lyophilized form: Not applicable.  
After reconstitution: 1 mg/ml.

**Note:** THIS PRODUCT IS FOR RESEARCH USE ONLY. NOT FOR USE IN DIAGNOSTIC, THERAPEUTIC OR COSMETIC PROCEDURES. NOT FOR HUMAN OR ANIMAL CONSUMPTION.

For Reference Only