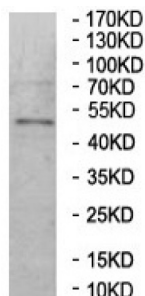
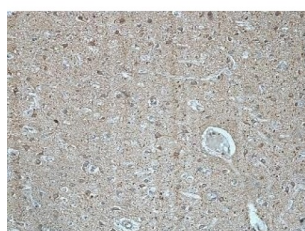


Tubulin Beta 2B (TUBB2B) Antibody

Catalogue No.: abx145775



WB analysis of HeLa cell lysates.



IHC-P analysis of human brain tissue, with cytoplasmic staining.

TUBB2B Antibody is a Rabbit Polyclonal against TUBB2B.

Target:	Tubulin Beta 2B (TUBB2B)
Clonality:	Polyclonal
Reactivity:	Human
Tested Applications:	ELISA, WB, IHC
Host:	Rabbit
Recommended dilutions:	ELISA: 1/20000 - 1/80000, WB: 1/500 - 1/2000, IHC: 1/100 - 1/200. Optimal dilutions/concentrations should be determined by the end user.
Conjugation:	Unconjugated
Immunogen:	Recombinant fragment corresponding to 158-327 AA of human TUBB2B.
Isotype:	IgG
Form:	Lyophilized
Purification:	Purified by antigen affinity column chromatography.

Datasheet

Version: 2.0.0

Revision date: 01 Sep 2025



Reconstitution: Reconstitute in 100 µl of sterile distilled H₂O with 50% glycerol.

Storage: Store at -20 °C. Avoid repeated freeze/thaw cycles.

NCBI Accession: BC001352

Molecular Weight: Observed MW: 50 kDa

Buffer: Prior to lyophilization: 1% BSA and 0.02% NaN₃.

Specificity: Predicted to react with Mouse and Rat TUBB2B.

Concentration: Lyophilized form: Not applicable.
After reconstitution: 1 mg/ml.

Note: THIS PRODUCT IS FOR RESEARCH USE ONLY. NOT FOR USE IN DIAGNOSTIC, THERAPEUTIC OR COSMETIC PROCEDURES. NOT FOR HUMAN OR ANIMAL CONSUMPTION.

For Reference Only