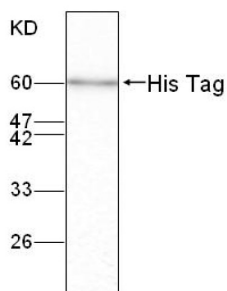
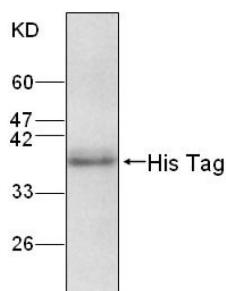


## His Tag Antibody

Catalogue No.: abx018240



WB analysis of C-terminal His-tagged fusion protein, using His Tag antibody (1/2000 dilution).



WB analysis of N-terminal His-tagged fusion protein, using His Tag antibody (1/2000 dilution).

His Tag Antibody is a Mouse Monoclonal against His Tag. A polyhistidine-tag is an amino acid motif in proteins that consists of at least five histidine (His) residues, often at the N- or C-terminus of the protein. Monoclonal antibodies specific to six histidine tags can greatly improve the effectiveness of several different kinds of immunoassays, helping researchers identify, detect, and purify polyhistidine fusion proteins in bacteria, insect cells, and mammalian cells.

**Target:** His Tag

**Clonality:** Monoclonal

**Clone:** K331

**Reactivity:** Human

**Tested Applications:** ELISA, WB

**Host:** Mouse

**Recommended dilutions:** Optimal dilutions/concentrations should be determined by the end user.

**Conjugation:** Unconjugated

**Immunogen:** Synthetic peptide corresponding to fragment (HHHHHH) of His Tag.

**Isotype:** IgG<sub>1</sub>

# Datasheet

Version: 5.0.0

Revision date: 15 Jun 2025



<b>Form:</b>	Liquid
<b>Purification:</b>	Purified from ascites by Protein A chromatography.
<b>Storage:</b>	Aliquot and store at -20°C. Avoid repeated freeze/thaw cycles.
<b>Buffer:</b>	Citrate-Tris-HCl, pH 7.0, with 0.02% Proclin-300.
<b>Specificity:</b>	Specifically recognizes the 6X His-Tag at the C-terminus or N-terminus of recombinant proteins, which can be used to detect His-Tag fusion proteins of various expression vectors.
<b>Concentration:</b>	1 mg/ml
<b>Note:</b>	THIS PRODUCT IS FOR RESEARCH USE ONLY. NOT FOR USE IN DIAGNOSTIC, THERAPEUTIC OR COSMETIC PROCEDURES. NOT FOR HUMAN OR ANIMAL CONSUMPTION.

For Reference Only