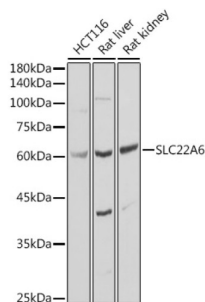


Solute Carrier Family 22 Member 6 (SLC22A6) Antibody

Catalogue No.: abx001500



Western blot analysis of various lysates using SLC22A6 Antibody at 1/1000 dilution. Secondary antibody: HRP-conjugated Goat anti-Rabbit IgG (H+L) at 1/10000 dilution. Lysates/proteins: 25 µg per lane. Blocking buffer: 3% nonfat dry milk in TBST. Exposure time: 10s.

SLC22A6 Antibody is a Rabbit Polyclonal antibody against SLC22A6. The protein encoded by this gene is involved in the sodium-dependent transport and excretion of organic anions, some of which are potentially toxic. The encoded protein is an integral membrane protein and may be localized to the basolateral membrane. Four transcript variants encoding four different isoforms have been found for this gene. [provided by RefSeq, Jul 2008].

Target:	Solute Carrier Family 22 Member 6 (SLC22A6)
Clonality:	Polyclonal
Reactivity:	Human, Rat
Tested Applications:	ELISA, WB
Host:	Rabbit
Recommended dilutions:	ELISA: 1 µg/ml, WB: 1/500 - 1/1000. Optimal dilutions/concentrations should be determined by the end user.
Conjugation:	Unconjugated
Immunogen:	Recombinant fusion protein containing a sequence corresponding to amino acids 31-135 of human SLC22A6.
Isotype:	IgG
Form:	Liquid
Purification:	Purified by affinity chromatography.
Storage:	Aliquot and store at -20°C. Avoid repeated freeze/thaw cycles.
UniProt Primary AC:	Q4U2R8 (UniProt , ExPASy)
Gene Symbol:	SLC22A6

Datasheet

Version: 5.0.0

Revision date: 06 Mar 2025



GeneID: [9356](#)

NCBI Accession: NP_004781.2

String: [9606.ENSP00000367102](#)

Molecular Weight: Calculated MW: 62 kDa
Observed MW: 62 kDa

Buffer: PBS, pH 7.3, containing 0.02% sodium azide, 50% glycerol.

Concentration: > 0.2 mg/ml

Note: THIS PRODUCT IS FOR RESEARCH USE ONLY. NOT FOR USE IN DIAGNOSTIC, THERAPEUTIC OR COSMETIC PROCEDURES. NOT FOR HUMAN OR ANIMAL CONSUMPTION.

For Reference Only