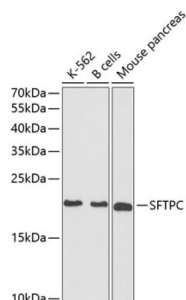
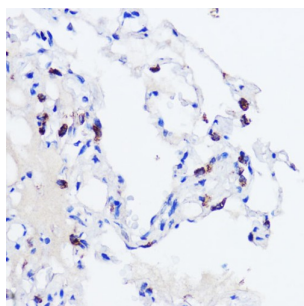


Pulmonary Surfactant-Associated Protein C (SFTPC) Antibody

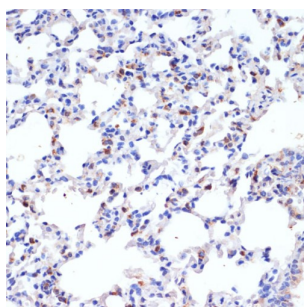
Catalogue No.: abx001517



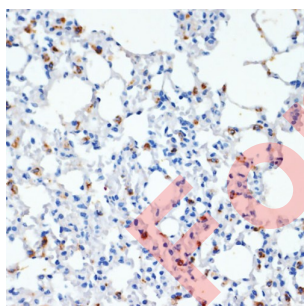
Western blot analysis of extracts of various cell lines using SFTPC Antibody (1/1000 dilution).



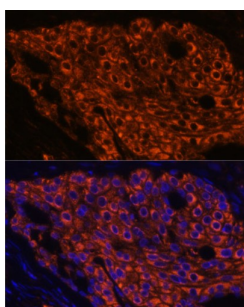
Immunohistochemistry of paraffin-embedded Human lung using SFTPC Antibody (1/200 dilution, 40x lens).



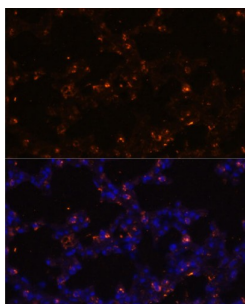
Immunohistochemistry of paraffin-embedded Rat lung using SFTPC Antibody (1/200 dilution, 40x lens).



Immunohistochemistry of paraffin-embedded Mouse lung using SFTPC Antibody (1/200 dilution, 40x lens).



Immunofluorescence analysis of Human lung cancer using SFTPC Antibody (1/100 dilution, 40x lens). Blue: DAPI for nuclear staining.



Immunofluorescence analysis of Mouse lung using SFTPC Antibody (1/100 dilution, 40x lens).
Blue: DAPI for nuclear staining.

SFTPC Antibody is a Rabbit Polyclonal antibody against SFTPC. This gene encodes the pulmonary-associated surfactant protein C (SPC), an extremely hydrophobic surfactant protein essential for lung function and homeostasis after birth. Pulmonary surfactant is a surface-active lipoprotein complex composed of 90% lipids and 10% proteins which include plasma proteins and apolipoproteins SPA, SPB, SPC and SPD. The surfactant is secreted by the alveolar cells of the lung and maintains the stability of pulmonary tissue by reducing the surface tension of fluids that coat the lung. Multiple mutations in this gene have been identified, which cause pulmonary surfactant metabolism dysfunction type 2, also called pulmonary alveolar proteinosis due to surfactant protein C deficiency, and are associated with interstitial lung disease in older infants, children, and adults. Alternatively spliced transcript variants encoding different protein isoforms have been identified.

Target:	Pulmonary Surfactant-Associated Protein C (SFTPC)
Clonality:	Polyclonal
Reactivity:	Human, Mouse, Rat
Tested Applications:	WB, IHC, IF/ICC
Host:	Rabbit
Recommended dilutions:	WB: 1/500 - 1/2000, IHC-P: 1/50 - 1/200, IF/ICC: 1/50 - 1/200. Not tested in IHC-F. Optimal dilutions/concentrations should be determined by the end user.
Conjugation:	Unconjugated
Immunogen:	Recombinant fusion protein corresponding to human SFTPC
Isotype:	IgG
Form:	Liquid
Purification:	Purified by affinity chromatography.
Storage:	Aliquot and store at -20°C. Avoid repeated freeze/thaw cycles.
UniProt Primary AC:	P11686 (UniProt , ExPASy)

Datasheet

Version: 5.0.0

Revision date: 30 Sep 2025



Gene Symbol: SFTPC

GeneID: [6440](#)

OMIM: [178620](#)

NCBI Accession: NP_003009.2

HGNC: 10802

KEGG: hsa:6440

Ensembl: ENSG00000168484

String: [9606.ENSP00000316152](#)

Molecular Weight: Calculated MW: 20 kDa/21 kDa
Observed MW: 21 kDa

Buffer: PBS, pH 7.3, containing 0.02% sodium azide, 50% glycerol.

Concentration: 1 mg/ml

Note: THIS PRODUCT IS FOR RESEARCH USE ONLY. NOT FOR USE IN DIAGNOSTIC, THERAPEUTIC OR COSMETIC PROCEDURES. NOT FOR HUMAN OR ANIMAL CONSUMPTION.