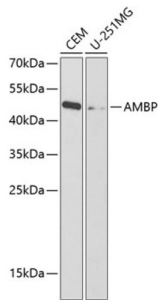


## Protein AMBP (AMBP) Antibody

Catalogue No.: abx001526



Western blot analysis of extracts of various cell lines using AMBP Antibody (1/1000 dilution).

AMBP Antibody is a Rabbit Polyclonal antibody against AMBP. This gene encodes a complex glycoprotein secreted in plasma. The precursor is proteolytically processed into distinct functioning proteins: alpha-1-microglobulin, which belongs to the superfamily of lipocalin transport proteins and may play a role in the regulation of inflammatory processes, and bikunin, which is a urinary trypsin inhibitor belonging to the superfamily of Kunitz-type protease inhibitors and plays an important role in many physiological and pathological processes. This gene is located on chromosome 9 in a cluster of lipocalin genes.

**Target:** Protein AMBP (AMBP)

**Clonality:** Polyclonal

**Reactivity:** Human

**Tested Applications:** WB

**Host:** Rabbit

**Recommended dilutions:** WB: 1/500 - 1/2000. Optimal dilutions/concentrations should be determined by the end user.

**Conjugation:** Unconjugated

**Immunogen:** Recombinant fusion protein corresponding to human AMBP

**Isotype:** IgG

**Form:** Liquid

**Purification:** Purified by affinity chromatography.

**Storage:** Aliquot and store at -20°C. Avoid repeated freeze/thaw cycles.

**UniProt Primary AC:** P02760 ([UniProt](#), [ExPASy](#))

# Datasheet

Version: 7.0.0

Revision date: 05 Mar 2025



**Gene Symbol:** AMBP

**GeneID:** [259](#)

**NCBI Accession:** NP\_001624.1

**KEGG:** hsa:259

**String:** [9606.ENSP00000265132](#)

**Molecular Weight:** Calculated MW: 38 kDa  
Observed MW: 46 kDa

**Buffer:** PBS, pH 7.3, containing 0.02% sodium azide, 50% glycerol.

**Concentration:** 1 mg/ml

**Note:** THIS PRODUCT IS FOR RESEARCH USE ONLY. NOT FOR USE IN DIAGNOSTIC, THERAPEUTIC OR COSMETIC PROCEDURES. NOT FOR HUMAN OR ANIMAL CONSUMPTION.

For Reference Only