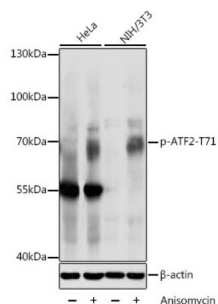
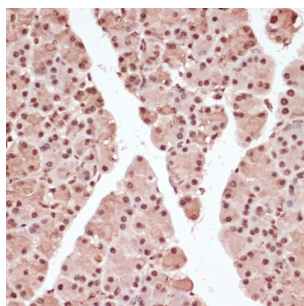


ATF2 (pT53) Antibody

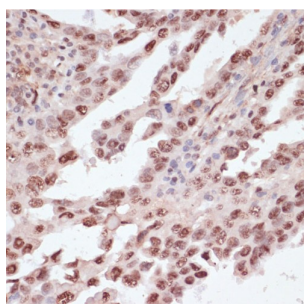
Catalogue No.: abx000109



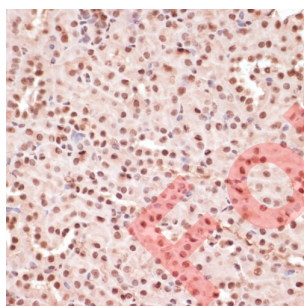
Western blot analysis of various lysates using Phospho-ATF2-T71 Antibody at 1/1000 dilution. HeLa cells were treated by Anisomycin (25 µg/ml) for 30 minutes after serum-starvation overnight. NIH/3T3 cells were treated by Anisomycin (25 µg/ml) for 30 minutes. Secondary antibody: HRP-conjugated Goat anti-Rabbit IgG (H+L) at 1/10000 dilution. Lysates/proteins: 25 µg per lane. Blocking buffer: 3% BSA. Exposure time: 10s.



Immunohistochemistry analysis of paraffin-embedded Rat pancreas using Phospho-ATF2-T71 Antibody at dilution of 1/100 (40x lens). Microwave antigen retrieval performed in 0.01 M Tris/EDTA Buffer (pH 9.0) prior to IHC staining.



Immunohistochemistry analysis of paraffin-embedded Human lung cancer using Phospho-ATF2-T71 Antibody at dilution of 1/100 (40x lens). Microwave antigen retrieval performed in 0.01 M Tris/EDTA Buffer (pH 9.0) prior to IHC staining.



Immunohistochemistry analysis of paraffin-embedded Mouse kidney using Phospho-ATF2-T71 Antibody at dilution of 1/100 (40x lens). Microwave antigen retrieval performed in 0.01 M Tris/EDTA Buffer (pH 9.0) prior to IHC staining.

ATF2 (pT53) Antibody is a Rabbit Polyclonal antibody against ATF2 (pT53). This gene encodes a transcription factor that is a member of the leucine zipper family of DNA binding proteins. This protein binds to the cAMP-responsive element (CRE), an octameric palindrome. It forms a homodimer or a heterodimer with c-Jun and stimulates CRE-dependent transcription. This protein is also a histone acetyltransferase (HAT) that specifically acetylates histones H2B and H4 in vitro; thus it may represent a class of sequence-specific factors that activate transcription by direct effects on chromatin components. Several alternatively spliced transcript variants have been found for this gene.

Target:

ATF2 (pT53)

Datasheet

Version: 5.0.0
Revision date: 24 Jun 2025



Clonality:	Polyclonal
Reactivity:	Human, Mouse, Rat
Tested Applications:	ELISA, WB, IHC
Host:	Rabbit
Recommended dilutions:	ELISA: 1 µg/ml, WB: 1/500 - 1/1000, IHC-P: 1/50 - 1/100. Not tested in IHC-F. Optimal dilutions/concentrations should be determined by the end user.
Conjugation:	Unconjugated
Immunogen:	A synthetic phosphorylated peptide around T71 of human ATF2.
Isotype:	IgG
Form:	Liquid
Purification:	Purified by affinity chromatography.
Storage:	Aliquot and store at -20°C. Avoid repeated freeze/thaw cycles.
UniProt Primary AC:	P15336 (UniProt , ExPASy)
Gene Symbol:	ATF2
GeneID:	1386
NCBI Accession:	NP_001871.2
Molecular Weight:	Calculated MW: 55 kDa Observed MW: 70 kDa
Buffer:	PBS, pH 7.3, containing 0.02% sodium azide, 50% glycerol.
Concentration:	> 0.2 mg/ml
Note:	THIS PRODUCT IS FOR RESEARCH USE ONLY. NOT FOR USE IN DIAGNOSTIC, THERAPEUTIC OR COSMETIC PROCEDURES. NOT FOR HUMAN OR ANIMAL CONSUMPTION.