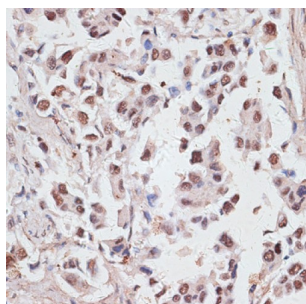
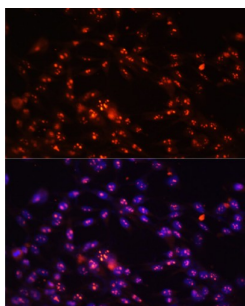


H/ACA Ribonucleoprotein Complex Subunit DKC1 (DKC1) Antibody

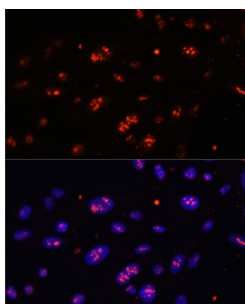
Catalogue No.: abx001537



Immunohistochemistry of paraffin-embedded Human lung cancer using DKC1 Antibody (1/100 dilution, 40x lens).



Immunofluorescence analysis of NIH-3T3 cells using DKC1 Antibody (1/100 dilution). Blue: DAPI for nuclear staining.



Immunofluorescence analysis of U-2 OS cells using DKC1 Antibody (1/100 dilution). Blue: DAPI for nuclear staining.

DKC1 Antibody is a Rabbit Polyclonal antibody against DKC1. This gene is a member of the H/ACA snoRNPs (small nucleolar ribonucleoproteins) gene family. snoRNPs are involved in various aspects of rRNA processing and modification and have been classified into two families: C/D and H/ACA. The H/ACA snoRNPs also include the NOLA1, 2 and 3 proteins. The protein encoded by this gene and the three NOLA proteins localize to the dense fibrillar components of nucleoli and to coiled (Cajal) bodies in the nucleus. Both 18S rRNA production and rRNA pseudouridylation are impaired if any one of the four proteins is depleted. These four H/ACA snoRNP proteins are also components of the telomerase complex. The protein encoded by this gene is related to the *Saccharomyces cerevisiae* Cbf5p and *Drosophila melanogaster* Nop60B proteins. The gene lies in a tail-to-tail orientation with the palmitoylated erythrocyte membrane protein gene and is transcribed in a telomere to centromere direction. Both nucleotide substitutions and single trinucleotide repeat polymorphisms have been found in this gene. Mutations in this gene cause X-linked dyskeratosis congenita, a disease resulting in reticulate skin pigmentation, mucosal leukoplakia, nail dystrophy, and progressive bone marrow failure in most cases. Mutations in this gene also cause Hoyeraal-Hreidarsson syndrome, which is a more severe form of dyskeratosis congenita. Two transcript variants encoding different isoforms have been found for this gene. [provided by RefSeq, Dec 2008].

Target: H/ACA Ribonucleoprotein Complex Subunit DKC1 (DKC1)

Clonality: Polyclonal

Datasheet

Version: 3.0.0
Revision date: 23 Jun 2025



Reactivity:	Human, Mouse
Tested Applications:	IHC, IF/ICC
Host:	Rabbit
Recommended dilutions:	IHC-P: 1/50 - 1/100, IF/ICC: 1/50 - 1/100. Not tested in IHC-F. Optimal dilutions/concentrations should be determined by the end user.
Conjugation:	Unconjugated
Immunogen:	Recombinant fusion protein corresponding to human DKC1
Isotype:	IgG
Form:	Liquid
Purification:	Purified by affinity chromatography.
Storage:	Aliquot and store at -20°C. Avoid repeated freeze/thaw cycles.
UniProt Primary AC:	O60832 (UniProt , ExPASy)
Gene Symbol:	DKC1
GeneID:	1736
NCBI Accession:	NP_001354.1
KEGG:	hsa:1736
String:	9606.ENSP00000358563
Buffer:	PBS, pH 7.3, containing 0.02% sodium azide, 50% glycerol.
Concentration:	1 mg/ml
Note:	THIS PRODUCT IS FOR RESEARCH USE ONLY. NOT FOR USE IN DIAGNOSTIC, THERAPEUTIC OR COSMETIC PROCEDURES. NOT FOR HUMAN OR ANIMAL CONSUMPTION.