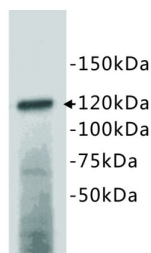


Prominin-1 (PROM1) Antibody

Catalogue No.: abx019041



WB: mouse kidney tissue lysate

CD133 Antibody is a rabbit polyclonal antibody against human, mouse and rat CD133 (prominin-1). In humans, the CD133 glycoprotein is encoded by the PROM1 gene and is approximately 100-120 kDa in weight. This protein is a member of the pentaspan transmembrane glycoprotein (5-TM) family, which specifically localizes to cellular protrusions. CD133 is expressed in a broad range of cell types including haematopoietic stem cells, mammary glands and cells of the digestive tract. Its expression is regulated by several different factors including TGF beta 1 and microRNA.

CD133 has also been identified as a key modulator of several different functions in cancer cells including tumorigenesis and metastasis which promotes their growth, spread and survival. As a result, CD133 is now frequently used as a biomarker for detecting and isolating stem cell and cancer cell populations. Abbexa's CD133 Antibody (abx019041) has been tested in several different applications including Western blotting (WB), immunohistochemistry, immunofluorescence (IF/ICC) and flow cytometry. This allows for the detection, observation and isolation of CD133 and CD133+ cells.

Target:	Prominin-1 (PROM1)
Clonality:	Polyclonal
Reactivity:	Human, Mouse, Rat
Tested Applications:	WB, IHC, IF/ICC
Host:	Rabbit
Recommended dilutions:	WB: 1/250 - 1/500, IHC-P: 1/50, FCM: 1/100 - 1/200. Optimal dilutions/concentrations should be determined by the end user.
Conjugation:	Unconjugated
Immunogen:	Recombinant human CD133.
Isotype:	IgG
Purification:	Immunogen affinity purified.
Storage:	Aliquot and store at -20 °C. Avoid repeated freeze/thaw cycles.

Datasheet

Version: 6.0.0

Revision date: 27 Sep 2025



UniProt Primary AC: O43490 ([UniProt](#), [ExPASy](#))

Gene Symbol: PROM1

GeneID: [8842](#)

OMIM: [604365](#)

HGNC: 9454

KEGG: hsa:8842

Ensembl: ENSG00000007062

String: [9606.ENSP00000426809](#)

Buffer: TBS, pH 7.4, 0.5% BSA, 40% glycerol and 0.05% sodium azide.

Note: THIS PRODUCT IS FOR RESEARCH USE ONLY. NOT FOR USE IN DIAGNOSTIC, THERAPEUTIC OR COSMETIC PROCEDURES. NOT FOR HUMAN OR ANIMAL CONSUMPTION.

For Reference Only