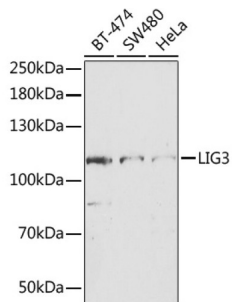
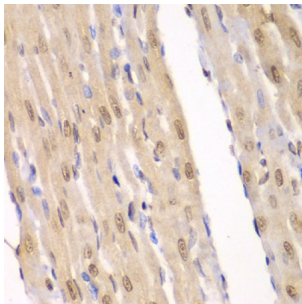


## DNA Ligase 3 (LIG3) Antibody

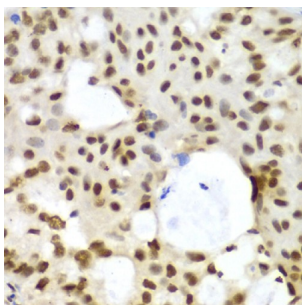
Catalogue No.: abx001550



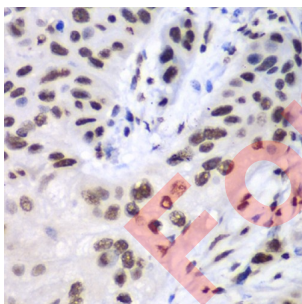
Western blot analysis of extracts of various cell lines using LIG3 Antibody (1/1000 dilution).



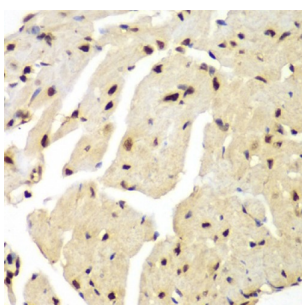
Immunohistochemistry of paraffin-embedded Rat heart using LIG3 Antibody (1/100 dilution, 40x lens).



Immunohistochemistry of paraffin-embedded Human oophoroma using LIG3 Antibody (1/100 dilution, 40x lens).



Immunohistochemistry of paraffin-embedded Human esophageal cancer using LIG3 Antibody (1/100 dilution, 40x lens).



Immunohistochemistry of paraffin-embedded Mouse heart using LIG3 Antibody (1/100 dilution, 40x lens).

# Datasheet

Version: 4.0.0  
Revision date: 04 Oct 2025



LIG3 Antibody is a Rabbit Polyclonal antibody against LIG3. This gene is a member of the DNA ligase family. Each member of this family encodes a protein that catalyzes the joining of DNA ends but they each have a distinct role in DNA metabolism. The protein encoded by this gene is involved in excision repair and is located in both the mitochondria and nucleus, with translation initiation from the upstream start codon allowing for transport to the mitochondria and translation initiation from a downstream start codon allowing for transport to the nucleus. Additionally, alternate transcriptional splice variants, encoding different isoforms, have been characterized. [provided by RefSeq, Jul 2008].

<b>Target:</b>	DNA Ligase 3 (LIG3)
<b>Clonality:</b>	Polyclonal
<b>Reactivity:</b>	Human, Mouse, Rat
<b>Tested Applications:</b>	WB, IHC
<b>Host:</b>	Rabbit
<b>Recommended dilutions:</b>	WB: 1/500 - 1/2000, IHC-P: 1/50 - 1/200. Not tested in IHC-F. Optimal dilutions/concentrations should be determined by the end user.
<b>Conjugation:</b>	Unconjugated
<b>Immunogen:</b>	Recombinant fusion protein corresponding to human LIG3
<b>Isotype:</b>	IgG
<b>Form:</b>	Liquid
<b>Purification:</b>	Purified by affinity chromatography.
<b>Storage:</b>	Aliquot and store at -20°C. Avoid repeated freeze/thaw cycles.
<b>UniProt Primary AC:</b>	P49916 ( <a href="#">UniProt</a> , <a href="#">ExPASy</a> )
<b>Gene Symbol:</b>	LIG3
<b>GeneID:</b>	<a href="#">3980</a>
<b>NCBI Accession:</b>	NP_039269.2
<b>KEGG:</b>	hsa:3980
<b>String:</b>	<a href="#">9606.ENSP00000367787</a>
<b>Molecular Weight:</b>	Calculated MW: 95 kDa/102 kDa/106 kDa/112 kDa Observed MW: 112 kDa

# Datasheet

Version: 4.0.0

Revision date: 04 Oct 2025



**Buffer:** PBS, pH 7.3, containing 0.02% sodium azide, 50% glycerol.

**Concentration:** 1 mg/ml

**Note:** THIS PRODUCT IS FOR RESEARCH USE ONLY. NOT FOR USE IN DIAGNOSTIC, THERAPEUTIC OR COSMETIC PROCEDURES. NOT FOR HUMAN OR ANIMAL CONSUMPTION.

For Reference Only