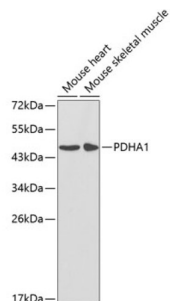
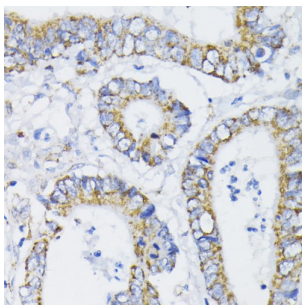


Pyruvate Dehydrogenase E1 Component Subunit Alpha, Somatic Form, Mitochondrial (PDHA1) Antibody

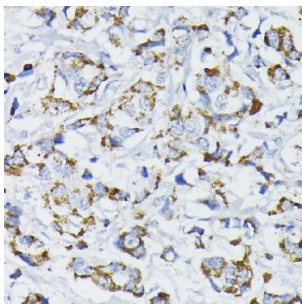
Catalogue No.: abx001554



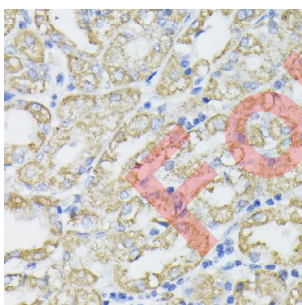
Western blot analysis of extracts of various cell lines using PDHA1 Antibody (1/1000 dilution).



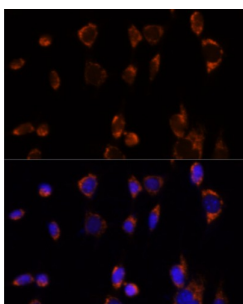
Immunohistochemistry of paraffin-embedded Human colon carcinoma using PDHA1 Antibody (1/200 dilution, 40x lens).



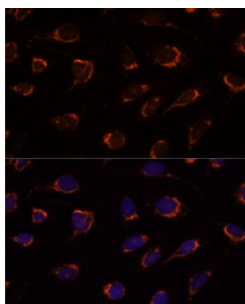
Immunohistochemistry of paraffin-embedded Human mammary cancer using PDHA1 Antibody (1/200 dilution, 40x lens).



Immunohistochemistry of paraffin-embedded Human stomach using PDHA1 Antibody (1/200 dilution, 40x lens).



Immunofluorescence analysis of NIH-3T3 cells using PDHA1 Antibody (1/100 dilution). Blue: DAPI for nuclear staining.



Immunofluorescence analysis of U-2 OS cells using PDHA1 Antibody (1/100 dilution). Blue: DAPI for nuclear staining.

PDHA1 Antibody is a Rabbit Polyclonal antibody against PDHA1. The pyruvate dehydrogenase (PDH) complex is a nuclear-encoded mitochondrial multienzyme complex that catalyzes the overall conversion of pyruvate to acetyl-CoA and CO₂, and provides the primary link between glycolysis and the tricarboxylic acid (TCA) cycle. The PDH complex is composed of multiple copies of three enzymatic components: pyruvate dehydrogenase (E1), dihydrolipoamide acetyltransferase (E2) and lipoamide dehydrogenase (E3). The E1 enzyme is a heterotetramer of two alpha and two beta subunits. This gene encodes the E1 alpha 1 subunit containing the E1 active site, and plays a key role in the function of the PDH complex. Mutations in this gene are associated with pyruvate dehydrogenase E1-alpha deficiency and X-linked Leigh syndrome. Alternatively spliced transcript variants encoding different isoforms have been found for this gene.

Target:	Pyruvate Dehydrogenase E1 Component Subunit Alpha, Somatic Form, Mitochondrial (PDHA1)
Clonality:	Polyclonal
Reactivity:	Human, Mouse, Rat
Tested Applications:	WB, IHC, IF/ICC
Host:	Rabbit
Recommended dilutions:	WB: 1/500 - 1/2000, IHC-P: 1/50 - 1/200, IF/ICC: 1/50 - 1/200. Not tested in IHC-F. Optimal dilutions/concentrations should be determined by the end user.
Conjugation:	Unconjugated
Immunogen:	Recombinant fusion protein corresponding to human PDHA1
Isotype:	IgG
Form:	Liquid
Purification:	Purified by affinity chromatography.
Storage:	Aliquot and store at -20°C. Avoid repeated freeze/thaw cycles.
UniProt Primary AC:	P08559 (UniProt , ExPASy)

Datasheet

Version: 5.0.0

Revision date: 10 Aug 2025



Gene Symbol: PDHA1

GeneID: [5160](#)

NCBI Accession: NP_000275.1

KEGG: hsa:5160

String: [9606.ENSP00000369134](#)

Molecular Weight: Calculated MW: 40 kDa/43 kDa/44 kDa/47 kDa
Observed MW: 45 kDa

Buffer: PBS, pH 7.3, containing 0.02% sodium azide, 50% glycerol.

Concentration: 1 mg/ml

Note: THIS PRODUCT IS FOR RESEARCH USE ONLY. NOT FOR USE IN DIAGNOSTIC, THERAPEUTIC OR COSMETIC PROCEDURES. NOT FOR HUMAN OR ANIMAL CONSUMPTION.

For Reference Only