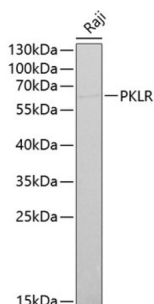


Pyruvate Kinase, Liver And RBC (PKLR) Antibody

Catalogue No.: abx001571



Western blot analysis of extracts of Raji cells using PKLR Antibody (1/1000 dilution).

PKLR Antibody is a Rabbit Polyclonal antibody against PKLR. The protein encoded by this gene is a pyruvate kinase that catalyzes the transphosphorylation of phosphoenolpyruvate into pyruvate and ATP, which is the rate-limiting step of glycolysis. Defects in this enzyme, due to gene mutations or genetic variations, are the common cause of chronic hereditary nonspherocytic hemolytic anemia (CNSHA or HNSHA). Multiple transcript variants encoding different isoforms have been found for this gene.

Target: Pyruvate Kinase, Liver And RBC (PKLR)

Clonality: Polyclonal

Reactivity: Human

Tested Applications: WB

Host: Rabbit

Recommended dilutions: WB: 1/500 - 1/2000. Optimal dilutions/concentrations should be determined by the end user.

Conjugation: Unconjugated

Immunogen: Recombinant fusion protein corresponding to human PKLR

Isotype: IgG

Form: Liquid

Purification: Purified by affinity chromatography.

Storage: Aliquot and store at -20°C. Avoid repeated freeze/thaw cycles.

UniProt Primary AC: P30613 ([UniProt](#), [ExPASy](#))

Datasheet

Version: 4.0.0

Revision date: 15 Aug 2025



Gene Symbol: PKLR

GeneID: [5313](#)

NCBI Accession: NP_000289.1

KEGG: hsa:5313

String: [9606.ENSP00000339933](#)

Molecular Weight: Calculated MW: 58 kDa/61 kDa
Observed MW: 62 kDa

Buffer: PBS, pH 7.3, containing 0.02% sodium azide, 50% glycerol.

Concentration: 1 mg/ml

Note: THIS PRODUCT IS FOR RESEARCH USE ONLY. NOT FOR USE IN DIAGNOSTIC, THERAPEUTIC OR COSMETIC PROCEDURES. NOT FOR HUMAN OR ANIMAL CONSUMPTION.

For Reference Only