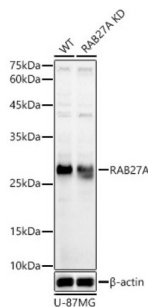
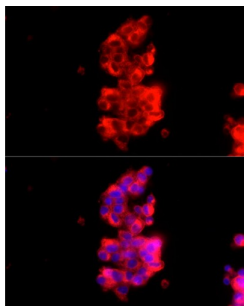


RAB27A, Member RAS Oncogene Family (RAB27A) Antibody

Catalogue No.: abx001580



Western blot analysis of lysates from wild type (WT) and RAB27A knockdown (KD) U-87MG cells, using [KD Validated] RAB27A Antibody at 1/1000 dilution. Secondary antibody: HRP-conjugated Goat anti-Rabbit IgG (H+L) at 1/10000 dilution. Lysates/proteins: 25 µg per lane. Blocking buffer: 3% nonfat dry milk in TBST. Exposure time: 10s.



Immunofluorescence analysis of HepG2 cells using [KD Validated] RAB27A Antibody at dilution of 1/100 (40x lens). Secondary antibody: Cy3-conjugated Goat anti-Rabbit IgG (H+L) at 1/500 dilution. Blue: DAPI for nuclear staining.

RAB27A Antibody is a Rabbit Polyclonal antibody against RAB27A. The protein encoded by this gene belongs to the small GTPase superfamily, Rab family. The protein is membrane-bound and may be involved in protein transport and small GTPase mediated signal transduction. Mutations in this gene are associated with Griscelli syndrome type 2. Alternative splicing occurs at this locus and four transcript variants encoding the same protein have been identified.

Target: RAB27A, Member RAS Oncogene Family (RAB27A)

Clonality: Polyclonal

Reactivity: Human, Mouse

Tested Applications: ELISA, WB, IF/ICC

Host: Rabbit

Recommended dilutions: ELISA: 1 µg/ml, WB: 1/500 - 1/1000, IF/ICC: 1/50 - 1/200. Optimal dilutions/concentrations should be determined by the end user.

Conjugation: Unconjugated

Immunogen: Recombinant protein corresponding to RAB27A. The exact sequence is proprietary.

Isotype: IgG

Form: Liquid

Datasheet

Version: 6.0.0
Revision date: 15 Jul 2025



Purification:	Purified by affinity chromatography.
Storage:	Aliquot and store at -20°C. Avoid repeated freeze/thaw cycles.
UniProt Primary AC:	P51159 (UniProt , ExPASy)
Gene Symbol:	RAB27A
GeneID:	5873
NCBI Accession:	NP_899057.1
KEGG:	hsa:5873
String:	9606.ENSP00000379601
Molecular Weight:	Calculated MW: 25 kDa Observed MW: 27 kDa
Buffer:	PBS, pH 7.3, containing 0.02% sodium azide, 50% glycerol.
Concentration:	1.29 mg/ml
Note:	THIS PRODUCT IS FOR RESEARCH USE ONLY. NOT FOR USE IN DIAGNOSTIC, THERAPEUTIC OR COSMETIC PROCEDURES. NOT FOR HUMAN OR ANIMAL CONSUMPTION.