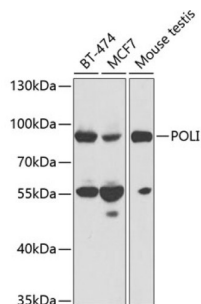


DNA Polymerase Iota (POLI) Antibody

Catalogue No.: abx001585



Western blot analysis of extracts of various cell lines using POLI Antibody (1/1000 dilution).

POLI Antibody is a Rabbit Polyclonal antibody against POLI. Mammalian Polymerase iota (POL I or POLI) owns an unusual combination of properties: it is stimulated by Mn^{2+} ions, can bypass some DNA lesions and misincorporates "G" opposite template "T" more frequently than incorporates the correct "A". [PMID:21304950] It also was shown to possess dRP lyase activity. In addition, POLI is much more efficient in the presence of Mn^{2+} in comparison to Mg^{2+} . [PMID: 17609217]. It has been proposed that POLI involves in immunoglobulin somatic hypermutation (SHM), bypass of deaminated cytosines, several adducts of the purine bases. DNA strand crosslinks and is involved in DNA repair under oxidative stress. [PMID:15199127].

Target: DNA Polymerase Iota (POLI)

Clonality: Polyclonal

Reactivity: Human, Mouse

Tested Applications: WB

Host: Rabbit

Recommended dilutions: WB: 1/500 - 1/2000. Optimal dilutions/concentrations should be determined by the end user.

Conjugation: Unconjugated

Immunogen: Recombinant fusion protein corresponding to human POLI

Isotype: IgG

Form: Liquid

Purification: Purified by affinity chromatography.

Storage: Aliquot and store at -20°C . Avoid repeated freeze/thaw cycles.

UniProt Primary AC: Q9UNA4 ([UniProt](#), [ExPASy](#))

Datasheet

Version: 3.0.0

Revision date: 12 Oct 2025



Gene Symbol: POLI

GeneID: [11201](#)

NCBI Accession: NP_009126.2

String: [9606.ENSP00000462664](#)

Molecular Weight: Calculated MW: 83 kDa
Observed MW: 85 kDa

Buffer: PBS, pH 7.3, containing 0.02% sodium azide, 50% glycerol.

Concentration: 1 mg/ml

Note: THIS PRODUCT IS FOR RESEARCH USE ONLY. NOT FOR USE IN DIAGNOSTIC, THERAPEUTIC OR COSMETIC PROCEDURES. NOT FOR HUMAN OR ANIMAL CONSUMPTION.

For Reference Only