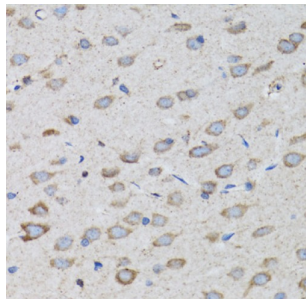
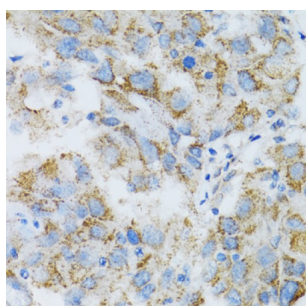


26S Proteasome Non-ATPase Regulatory Subunit 10 (PSMD10) Antibody

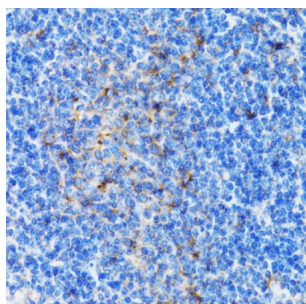
Catalogue No.: abx001592



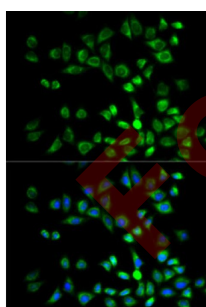
Immunohistochemistry of paraffin-embedded Rat brain using PSMD10 Antibody (1/100 dilution, 40x lens).



Immunohistochemistry of paraffin-embedded Human breast cancer using PSMD10 Antibody (1/100 dilution, 40x lens).



Immunohistochemistry of paraffin-embedded Mouse spleen using PSMD10 Antibody (1/100 dilution, 40x lens).



Immunofluorescence analysis of MCF7 cells using PSMD10 Antibody

26S Proteasome Non-ATPase Regulatory Subunit 10 (PSMD10) Antibody is a Rabbit Polyclonal antibody against 26S Proteasome Non-ATPase Regulatory Subunit 10 (PSMD10). This gene encodes a subunit of the PA700/19S complex, which is the regulatory component of the 26S proteasome. The 26S proteasome complex is required for ubiquitin-dependent protein degradation. This protein is a non-ATPase subunit that may be involved in protein-protein interactions. Aberrant expression of this gene may play a role in tumorigenesis. Two transcripts encoding different isoforms have been described. Pseudogenes have been identified on chromosomes 3 and 20.

Datasheet

Version: 4.0.0
Revision date: 25 Jul 2025



Target:	26S Proteasome Non-ATPase Regulatory Subunit 10 (PSMD10)
Clonality:	Polyclonal
Reactivity:	Human, Mouse, Rat
Tested Applications:	IHC, IF/ICC
Host:	Rabbit
Recommended dilutions:	IHC-P: 1/50 - 1/200, IF/ICC: 1/50 - 1/200. Not tested in IHC-F. Optimal dilutions/concentrations should be determined by the end user.
Conjugation:	Unconjugated
Immunogen:	Recombinant fusion protein corresponding to human PSMD10
Isotype:	IgG
Form:	Liquid
Purification:	Purified by affinity chromatography.
Storage:	Aliquot and store at -20°C. Avoid repeated freeze/thaw cycles.
UniProt Primary AC:	O75832 (UniProt , ExPASy)
Gene Symbol:	PSMD10
GeneID:	5716
OMIM:	300880
NCBI Accession:	NP_002805.1, NM_002814.3, NP_736606.1, NM_170750.2
KEGG:	hsa:5716
String:	9606.ENSP00000217958
Buffer:	PBS, pH 7.3, containing 0.02% sodium azide, 50% glycerol.
Concentration:	1 mg/ml
Note:	THIS PRODUCT IS FOR RESEARCH USE ONLY. NOT FOR USE IN DIAGNOSTIC, THERAPEUTIC OR COSMETIC PROCEDURES. NOT FOR HUMAN OR ANIMAL CONSUMPTION.