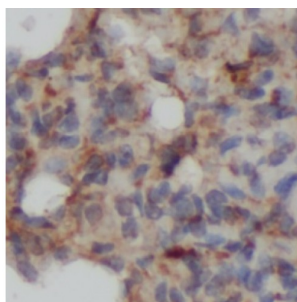


Rho Guanine Nucleotide Exchange Factor 1 (ARHGEF1) Antibody

Catalogue No.: abx217576



IHC-P analysis of rat lung tissue, using PER2 antibody (1/50 dilution).

Rho Guanine Nucleotide Exchange Factor 1 (ARHGEF1) Antibody is a Rabbit Polyclonal antibody for the detection of ARHGEF1.

Seems to play a role in the regulation of RhoA GTPase by guanine nucleotide-binding alpha-12 (GNA12) and alpha-13 (GNA13) subunits. Acts as GTPase-activating protein (GAP) for GNA12 and GNA13, and as guanine nucleotide exchange factor (GEF) for RhoA GTPase. Activated G alpha 13/GNA13 stimulates the RhoGEF activity through interaction with the RGS-like domain. This GEF activity is inhibited by binding to activated GNA12. Mediates angiotensin-2-induced RhoA activation.

Target: Rho Guanine Nucleotide Exchange Factor 1 (ARHGEF1)

Clonality: Polyclonal

Reactivity: Human, Rat

Tested Applications: ELISA, IHC

Host: Rabbit

Recommended dilutions: IHC: 1/20 - 1/200. Optimal dilutions/concentrations should be determined by the end user.

Conjugation: Unconjugated

Immunogen: Rho guanine nucleotide exchange factor(GEF) 1

Isotype: IgG

Form: Liquid

Purity: ≥ 95% (SDS-PAGE)

Purification: Purified by immunogen affinity chromatography.

Datasheet

Version: 1.0.0
Revision date: 06 Sep 2025



Storage: Aliquot and store at -20°C. Avoid repeated freeze/thaw cycles.

Validity: 12 months.

UniProt Primary AC: Q92888 ([UniProt](#), [ExPASy](#))

Gene Symbol: ARHGEF1

GeneID: [9138](#)

OMIM: [601855](#)

HGNC: 681

KEGG: hsa:9138

Ensembl: ENSG00000076928

String: [9606.ENSP00000337261](#)

Molecular Weight: Observed MW: 102-110 kDa

Buffer: PBS, pH 7.3, with 0.02% sodium azide and 50% glycerol.

Concentration: 2 mg/ml

Note: THIS PRODUCT IS FOR RESEARCH USE ONLY. NOT FOR USE IN DIAGNOSTIC, THERAPEUTIC OR COSMETIC PROCEDURES. NOT FOR HUMAN OR ANIMAL CONSUMPTION.