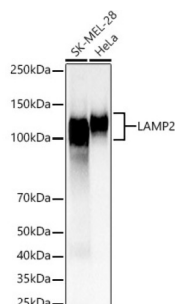
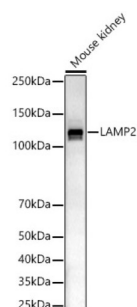


Lysosomal Associated Membrane Protein 2 (LAMP2) Antibody

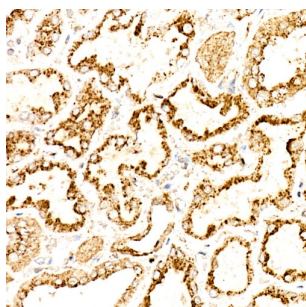
Catalogue No.: abx001598



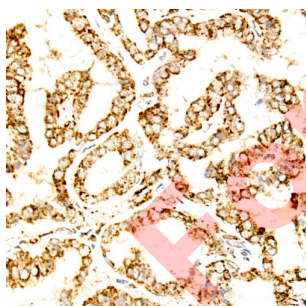
Western blot analysis of various lysates, using LAMP2 Antibody at 1/2000 dilution. Secondary antibody: HRP-conjugated Goat anti-Rabbit IgG (H+L) at 1/10000 dilution. Lysates/proteins: 25 µg per lane. Blocking buffer: 3% nonfat dry milk in TBST. Exposure time: 3s.



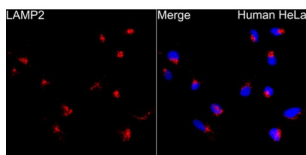
Western blot analysis of lysates from Mouse kidney, using LAMP2 Antibody at 1/2000 dilution. Secondary antibody: HRP-conjugated Goat anti-Rabbit IgG (H+L) at 1/10000 dilution. Lysates/proteins: 25 µg per lane. Blocking buffer: 3% nonfat dry milk in TBST. Exposure time: 180s.



Immunohistochemistry analysis of paraffin-embedded Human kidney using LAMP2 Antibody at dilution of 1/300 (40x lens). High pressure antigen retrieval performed in 0.01 M Citrate buffer (pH 6.0) prior to IHC staining.



Immunohistochemistry analysis of paraffin-embedded Human thyroid cancer using LAMP2 Antibody at dilution of 1/300 (40x lens). High pressure antigen retrieval performed in 0.01 M Citrate buffer (pH 6.0) prior to IHC staining.



Immunofluorescence analysis of HeLa cells using LAMP2 Antibody at dilution of 1/300 (40x lens). Secondary antibody: Cy3-conjugated Goat anti-Rabbit IgG (H+L) at 1/500 dilution. Blue: DAPI for nuclear staining.

Datasheet

Version: 4.0.0
Revision date: 11 Jun 2025



LAMP2 Antibody is a Rabbit Polyclonal antibody against LAMP2. Lysosomal-associated membrane protein 2 (LAMP2, synonyms: LAMPB, CD107b) is a member of a family of membrane glycoproteins. This glycoprotein provides selectins with carbohydrate ligands. LAMP2 may play a role in tumor cell metastasis. It may also function in the protection, maintenance, and adhesion of the lysosome. Prior to posttranslational modification, Lysosome Associated Membrane Protein 2 (LAMP2) is a ~45 kDa polypeptide. Mature, functional LAMP2 is extensively glycosylated with a variety of different N linked and O linked oligosaccharides with a total molecular weight of ~100-110 kDa.

Target:	Lysosomal Associated Membrane Protein 2 (LAMP2)
Clonality:	Polyclonal
Reactivity:	Human, Mouse
Tested Applications:	ELISA, WB, IHC, IF/ICC
Host:	Rabbit
Recommended dilutions:	ELISA: 1 µg/ml, WB: 1/1000 - 1/5000, IHC-P: 1/100 - 1/500, IF/ICC: 1/100 - 1/500. Not tested in IHC-F. Optimal dilutions/concentrations should be determined by the end user.
Conjugation:	Unconjugated
Immunogen:	Recombinant fusion protein containing a sequence corresponding to amino acids 29-375 of human LAMP2.
Isotype:	IgG
Form:	Liquid
Purification:	Purified by affinity chromatography.
Storage:	Aliquot and store at -20°C. Avoid repeated freeze/thaw cycles.
UniProt Primary AC:	P13473 (UniProt , ExPASy)
Gene Symbol:	LAMP2
GeneID:	3920
NCBI Accession:	NP_002285.1
KEGG:	hsa:3920
String:	9606.ENSP00000408411
Molecular Weight:	Calculated MW: 45 kDa Observed MW: 100-130 kDa

Datasheet

Version: 4.0.0

Revision date: 11 Jun 2025



Buffer: PBS, pH 7.3, containing 0.02% sodium azide, 50% glycerol.

Concentration: > 0.2 mg/ml

Note: THIS PRODUCT IS FOR RESEARCH USE ONLY. NOT FOR USE IN DIAGNOSTIC, THERAPEUTIC OR COSMETIC PROCEDURES. NOT FOR HUMAN OR ANIMAL CONSUMPTION.

For Reference Only