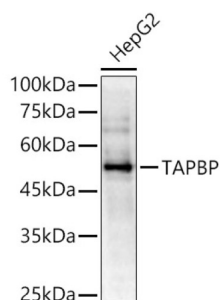
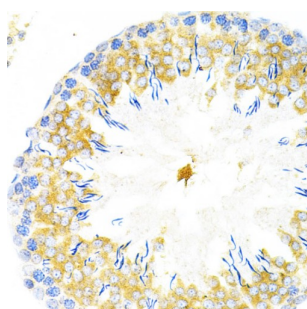


Tapasin (TAPBP) Antibody

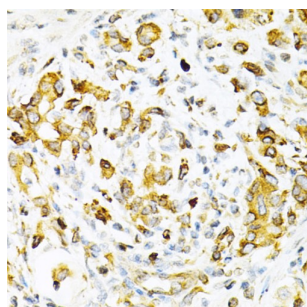
Catalogue No.: abx001603



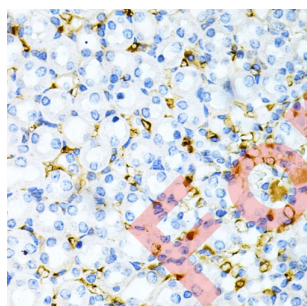
Western blot analysis of lysates from HepG2 cells, using TAPBP Antibody at 1/2000 dilution. Secondary antibody: HRP-conjugated Goat anti-Rabbit IgG (H+L) at 1/10000 dilution. Lysates/proteins: 25 µg per lane. Blocking buffer: 3% nonfat dry milk in TBST. Exposure time: 180s.



Immunohistochemistry analysis of paraffin-embedded Rat testis using TAPBP Antibody at dilution of 1/200 (40x lens). Microwave antigen retrieval performed in 0.01 M PBS Buffer (pH 7.2) prior to IHC staining.



Immunohistochemistry analysis of paraffin-embedded Human gastric cancer using TAPBP Antibody at dilution of 1/200 (40x lens). Microwave antigen retrieval performed in 0.01 M PBS Buffer (pH 7.2) prior to IHC staining.



Immunohistochemistry analysis of paraffin-embedded Mouse kidney using TAPBP Antibody at dilution of 1/200 (40x lens). Microwave antigen retrieval performed in 0.01 M PBS Buffer (pH 7.2) prior to IHC staining.

TAPBP Antibody is a Rabbit Polyclonal antibody against TAPBP. This gene encodes a transmembrane glycoprotein which mediates interaction between newly assembled major histocompatibility complex (MHC) class I molecules and the transporter associated with antigen processing (TAP), which is required for the transport of antigenic peptides across the endoplasmic reticulum membrane. This interaction is essential for optimal peptide loading on the MHC class I molecule. Up to four complexes of MHC class I and this protein may be bound to a single TAP molecule. This protein contains a C-terminal double-lysine motif (KKKAE) known to maintain membrane proteins in the endoplasmic reticulum. This gene lies within the major histocompatibility complex on chromosome 6. Alternative splicing results in three transcript variants encoding different isoforms.

Datasheet

Version: 5.0.0
Revision date: 16 May 2025



Target:	Tapasin (TAPBP)
Clonality:	Polyclonal
Reactivity:	Human, Mouse, Rat
Tested Applications:	ELISA, WB, IHC, IF/ICC
Host:	Rabbit
Recommended dilutions:	ELISA: 1 µg/ml, WB: 1/1000 - 1/5000, IHC-P: 1/50 - 1/100, IF/ICC: 1/50 - 1/100. Not tested in IHC-F. Optimal dilutions/concentrations should be determined by the end user.
Conjugation:	Unconjugated
Immunogen:	Recombinant fusion protein containing a sequence corresponding to amino acids 30-260 of human TAPBP.
Isotype:	IgG
Form:	Liquid
Purification:	Purified by affinity chromatography.
Storage:	Aliquot and store at -20°C. Avoid repeated freeze/thaw cycles.
UniProt Primary AC:	O15533 (UniProt , ExPASy)
Gene Symbol:	TAPBP
GeneID:	6892
OMIM:	601962
NCBI Accession:	NP_757345.2
HGNC:	11566
KEGG:	hsa:6892
Ensembl:	ENSG00000231925
String:	9606.ENSP00000404833
Molecular Weight:	Calculated MW: 48 kDa Observed MW: 48 kDa

Datasheet

Version: 5.0.0

Revision date: 16 May 2025



Buffer: PBS, pH 7.3, containing 0.05% Proclin-300, 50% glycerol.

Concentration: > 0.2 mg/ml

Note: THIS PRODUCT IS FOR RESEARCH USE ONLY. NOT FOR USE IN DIAGNOSTIC, THERAPEUTIC OR COSMETIC PROCEDURES. NOT FOR HUMAN OR ANIMAL CONSUMPTION.

For Reference Only