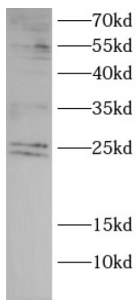
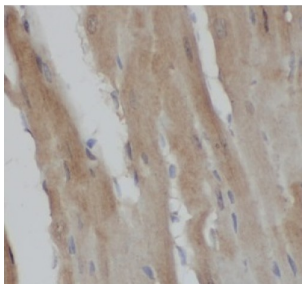


Growth Factor Receptor Bound Protein 2 (GRB2) Antibody

Catalogue No.: abx146629



WB analysis of Raji cells, using GRB2 antibody (1/1000 dilution).



IHC-P analysis of mouse heart tissue, using GRB2 antibody (1/100 dilution).

Growth Factor Receptor Bound Protein 2 (GRB2) Antibody is a Rabbit Polyclonal antibody for the detection of GRB2.

The protein encoded by this gene binds the epidermal growth factor receptor and contains one SH2 domain and two SH3 domains. Its two SH3 domains direct complex formation with proline-rich regions of other proteins, and its SH2 domain binds tyrosine phosphorylated sequences. This gene is similar to the Sem5 gene of *C.elegans*, which is involved in the signal transduction pathway. Two alternatively spliced transcript variants encoding different isoforms have been found for this gene.

Target: Growth Factor Receptor Bound Protein 2 (GRB2)

Clonality: Polyclonal

Reactivity: Human, Mouse, Rat

Tested Applications: ELISA, WB, IHC

Host: Rabbit

Recommended dilutions: WB: 1/500 - 1/2000, IHC: 1/50 - 1/200. Optimal dilutions/concentrations should be determined by the end user.

Conjugation: Unconjugated

Immunogen: growth factor receptor-bound protein 2

Isotype: IgG

Datasheet

Version: 2.0.0
Revision date: 24 May 2025



Form:	Liquid
Purity:	≥ 95% (SDS-PAGE)
Purification:	Purified by immunogen affinity chromatography.
Storage:	Aliquot and store at -20°C. Avoid repeated freeze/thaw cycles.
Validity:	12 months.
UniProt Primary AC:	P62993 (UniProt , ExPASy)
Gene Symbol:	GRB2
GeneID:	2885
OMIM:	108355
HGNC:	4566
KEGG:	hsa:2885
Ensembl:	ENSG00000177885
String:	9606.ENSP00000376345
Molecular Weight:	Observed MW: 25 kDa
Buffer:	PBS, pH 7.3, with 0.02% sodium azide and 50% glycerol.
Concentration:	2 mg/ml
Note:	THIS PRODUCT IS FOR RESEARCH USE ONLY. NOT FOR USE IN DIAGNOSTIC, THERAPEUTIC OR COSMETIC PROCEDURES. NOT FOR HUMAN OR ANIMAL CONSUMPTION.