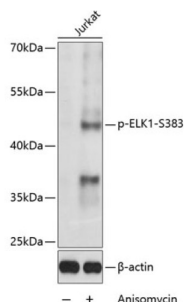


## ELK1 (pS383) Antibody

Catalogue No.: abx000118



Western blot analysis of lysates from Jurkat cells, using Phospho-ELK1-S383 Antibody at 1/1000 dilution. Jurkat cells were treated by Anisomycin (5 µg/ml) for 30 minutes after serum-starvation overnight. Secondary antibody: HRP-conjugated Goat anti-Rabbit IgG (H+L) at 1/10000 dilution. Lysates/proteins: 25 µg per lane. Blocking buffer: 3% BSA. Exposure time: 10s.

ELK1 (pS383) Antibody is a Rabbit Polyclonal antibody against ELK1 (pS383). Elk-1 is a member of the Ets family of transcription factors and of the ternary complex factor (TCF) subfamily. Proteins of the TCF subfamily form a ternary complex by binding to the serum response factor and the serum response element in the promoter of the c-fos proto-oncogene. The protein encoded by this gene is a nuclear target for the ras-raf-MAPK signaling cascade. Alternatively spliced transcript variants encoding the same protein have been found for this gene.

<b>Target:</b>	ELK1 (pS383)
<b>Clonality:</b>	Polyclonal
<b>Reactivity:</b>	Human, Mouse, Rat
<b>Tested Applications:</b>	ELISA, WB, IHC
<b>Host:</b>	Rabbit
<b>Recommended dilutions:</b>	ELISA: 1 µg/ml, WB: 1/500 - 1/1000, IHC-P: 1/50 - 1/200. Not tested in IHC-F. Optimal dilutions/concentrations should be determined by the end user.
<b>Conjugation:</b>	Unconjugated
<b>Immunogen:</b>	A synthetic phosphorylated peptide around S383 of human ELK1.
<b>Isotype:</b>	IgG
<b>Form:</b>	Liquid
<b>Purification:</b>	Purified by affinity chromatography.
<b>Storage:</b>	Aliquot and store at -20°C. Avoid repeated freeze/thaw cycles.
<b>UniProt Primary AC:</b>	P19419 ( <a href="#">UniProt</a> , <a href="#">ExPASy</a> )

# Datasheet

Version: 4.0.0

Revision date: 28 Jun 2025



**Gene Symbol:** ELK1

**GeneID:** [2002](#)

**NCBI Accession:** NP\_005220.2

**Molecular Weight:** Calculated MW: 45 kDa  
Observed MW: 45 kDa

**Buffer:** PBS, pH 7.3, containing 0.02% sodium azide, 50% glycerol.

**Concentration:** > 0.2 mg/ml

**Note:** THIS PRODUCT IS FOR RESEARCH USE ONLY. NOT FOR USE IN DIAGNOSTIC, THERAPEUTIC OR COSMETIC PROCEDURES. NOT FOR HUMAN OR ANIMAL CONSUMPTION.

For Reference Only