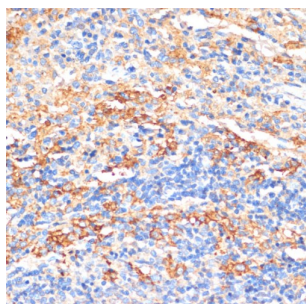
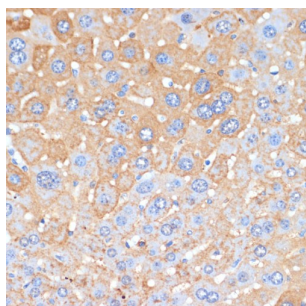


Serum Amyloid P-Component (APCS) Antibody

Catalogue No.: abx001624



Immunohistochemistry of paraffin-embedded Rat spleen using APCS Antibody (1/100 dilution, 40x lens).



Immunohistochemistry of paraffin-embedded Mouse liver using APCS Antibody (1/100 dilution, 40x lens).

APCS Antibody is a Rabbit Polyclonal antibody against APCS. The protein encoded by this gene is a glycoprotein, belonging to the pentraxin family of proteins, which has a characteristic pentameric organization. These family members have considerable sequence homology which is thought to be the result of gene duplication. The binding of the encoded protein to proteins in the pathological amyloid cross-beta fold suggests its possible role as a chaperone. This protein is also thought to control the degradation of chromatin. It has been demonstrated that this protein binds to apoptotic cells at an early stage, which raises the possibility that it is involved in dealing with apoptotic cells in vivo. [provided by RefSeq, Sep 2008].

Target: Serum Amyloid P-Component (APCS)

Clonality: Polyclonal

Reactivity: Human, Mouse, Rat

Tested Applications: IHC

Host: Rabbit

Recommended dilutions: IHC-P: 1/50 - 1/100. Not tested in IHC-F. Optimal dilutions/concentrations should be determined by the end user.

Conjugation: Unconjugated

Immunogen: Recombinant fusion protein corresponding to human APCS

Isotype: IgG

Datasheet

Version: 5.0.0

Revision date: 08 Aug 2025



Form:	Liquid
Purification:	Purified by affinity chromatography.
Storage:	Aliquot and store at -20°C. Avoid repeated freeze/thaw cycles.
UniProt Primary AC:	P02743 (UniProt , ExPASy)
Gene Symbol:	APCS
GeneID:	325
NCBI Accession:	NP_001630.1
KEGG:	hsa:325
String:	9606.ENSP00000255040
Buffer:	PBS, pH 7.3, containing 0.02% sodium azide, 50% glycerol.
Concentration:	1 mg/ml
Note:	THIS PRODUCT IS FOR RESEARCH USE ONLY. NOT FOR USE IN DIAGNOSTIC, THERAPEUTIC OR COSMETIC PROCEDURES. NOT FOR HUMAN OR ANIMAL CONSUMPTION.