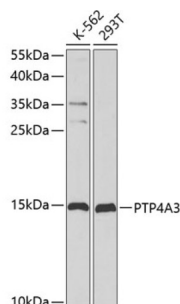
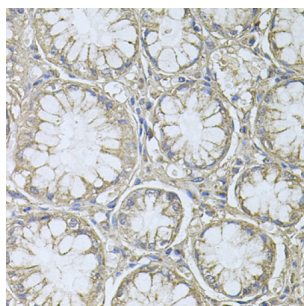


## Protein Tyrosine Phosphatase Type IVA 3 (PTP4A3) Antibody

Catalogue No.: abx001629



Western blot analysis of extracts of various cell lines using PTP4A3 Antibody (1/1000 dilution).



Immunohistochemistry of paraffin-embedded Human gastric cancer using PTP4A3 Antibody (1/100 dilution, 40x lens).

PTP4A3 Antibody is a Rabbit Polyclonal antibody against PTP4A3. This gene encodes a member of the protein-tyrosine phosphatase family. Protein tyrosine phosphatases are cell signaling molecules that play regulatory roles in a variety of cellular processes. Studies of this class of protein tyrosine phosphatase in mice demonstrates that they are prenylated in vivo, suggesting their association with cell plasma membrane. The encoded protein may enhance cell proliferation, and overexpression of this gene has been implicated in tumor metastasis. Alternative splicing results in multiple transcript variants.

**Target:** Protein Tyrosine Phosphatase Type IVA 3 (PTP4A3)

**Clonality:** Polyclonal

**Reactivity:** Human, Mouse

**Tested Applications:** WB, IHC

**Host:** Rabbit

**Recommended dilutions:** WB: 1/500 - 1/2000, IHC-P: 1/50 - 1/100. Not tested in IHC-F. Optimal dilutions/concentrations should be determined by the end user.

**Conjugation:** Unconjugated

**Immunogen:** Recombinant fusion protein corresponding to human PTP4A3

**Isotype:** IgG

# Datasheet

Version: 4.0.0  
Revision date: 20 Jul 2025



|                            |  |
|----------------------------|--|
| <b>Form:</b>               | Liquid   |
| <b>Purification:</b>       | Purified by affinity chromatography.   |
| <b>Storage:</b>            | Aliquot and store at -20°C. Avoid repeated freeze/thaw cycles.   |
| <b>UniProt Primary AC:</b> | O75365 ( <a href="#">UniProt</a> , <a href="#">ExPASy</a> )  |
| <b>Gene Symbol:</b>        | PTP4A3   |
| <b>GeneID:</b>             | <a href="#">11156</a>  |
| <b>NCBI Accession:</b>     | NP_009010.2  |
| <b>KEGG:</b>               | hsa:11156  |
| <b>String:</b>             | <a href="#">9606.ENSP00000332274</a>   |
| <b>Molecular Weight:</b>   | Calculated MW: 10 kDa/16 kDa/19 kDa<br>Observed MW: 15 kDa   |
| <b>Buffer:</b>             | PBS, pH 7.3, containing 0.02% sodium azide, 50% glycerol.  |
| <b>Concentration:</b>      | 1 mg/ml  |
| <b>Note:</b>               | THIS PRODUCT IS FOR RESEARCH USE ONLY. NOT FOR USE IN DIAGNOSTIC, THERAPEUTIC OR COSMETIC PROCEDURES. NOT FOR HUMAN OR ANIMAL CONSUMPTION. |