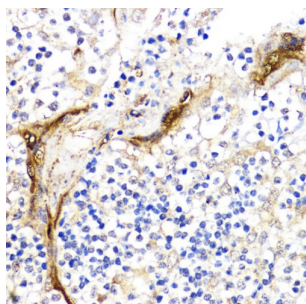
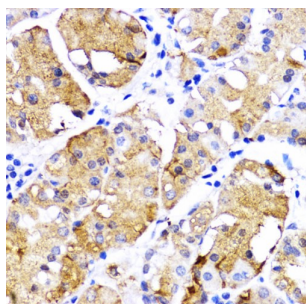


## Bone Morphogenetic Protein Receptor 1B (BMPR1B) Antibody

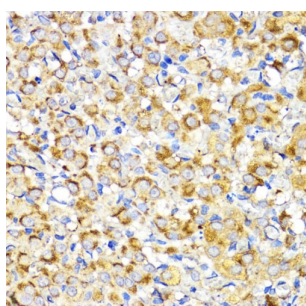
Catalogue No.: abx001630



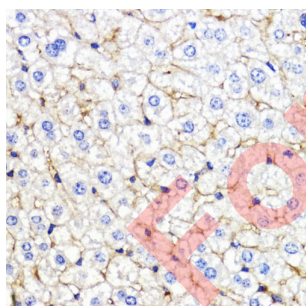
Immunohistochemistry of paraffin-embedded Human tonsil using BMPR1B Antibody (1/200 dilution, 40x lens).



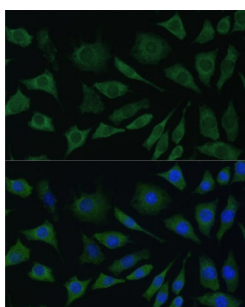
Immunohistochemistry of paraffin-embedded Human gastric cancer using BMPR1B Antibody (1/200 dilution, 40x lens).



Immunohistochemistry of paraffin-embedded Rat ovary using BMPR1B Antibody (1/200 dilution, 40x lens).



Immunohistochemistry of paraffin-embedded Mouse liver using BMPR1B Antibody (1/200 dilution, 40x lens).



Immunofluorescence analysis of L929 cells using BMPR1B Antibody (1/100 dilution). Blue: DAPI for nuclear staining.

# Datasheet

Version: 3.0.0  
Revision date: 08 Jun 2025



BMPR1B Antibody is a Rabbit Polyclonal antibody against BMPR1B. This gene encodes a member of the bone morphogenetic protein (BMP) receptor family of transmembrane serine/threonine kinases. The ligands of this receptor are BMPs, which are members of the TGF-beta superfamily. BMPs are involved in endochondral bone formation and embryogenesis. These proteins transduce their signals through the formation of heteromeric complexes of 2 different types of serine (threonine) kinase receptors: type I receptors of about 50-55 kD and type II receptors of about 70-80 kD. Type II receptors bind ligands in the absence of type I receptors, but they require their respective type I receptors for signaling, whereas type I receptors require their respective type II receptors for ligand binding. Mutations in this gene have been associated with primary pulmonary hypertension. Several transcript variants encoding two different isoforms have been found for this gene. [provided by RefSeq, Feb 2012].

<b>Target:</b>	Bone Morphogenetic Protein Receptor 1B (BMPR1B)
<b>Clonality:</b>	Polyclonal
<b>Reactivity:</b>	Human, Mouse, Rat
<b>Tested Applications:</b>	IHC, IF/ICC
<b>Host:</b>	Rabbit
<b>Recommended dilutions:</b>	IHC-P: 1/50 - 1/200, IF/ICC: 1/50 - 1/200. Not tested in IHC-F. Optimal dilutions/concentrations should be determined by the end user.
<b>Conjugation:</b>	Unconjugated
<b>Immunogen:</b>	Recombinant fusion protein corresponding to human BMPR1B
<b>Isotype:</b>	IgG
<b>Form:</b>	Liquid
<b>Purification:</b>	Purified by affinity chromatography.
<b>Storage:</b>	Aliquot and store at -20°C. Avoid repeated freeze/thaw cycles.
<b>UniProt Primary AC:</b>	O00238 ( <a href="#">UniProt</a> , <a href="#">ExPASy</a> )
<b>Gene Symbol:</b>	BMPR1B
<b>GeneID:</b>	<a href="#">658</a>
<b>NCBI Accession:</b>	NP_001194.1
<b>KEGG:</b>	hsa:658
<b>String:</b>	<a href="#">9606.ENSP00000401907</a>

# Datasheet

Version: 3.0.0

Revision date: 08 Jun 2025



**Buffer:** PBS, pH 7.3, containing 0.02% sodium azide, 50% glycerol.

**Concentration:** 1 mg/ml

**Note:** THIS PRODUCT IS FOR RESEARCH USE ONLY. NOT FOR USE IN DIAGNOSTIC, THERAPEUTIC OR COSMETIC PROCEDURES. NOT FOR HUMAN OR ANIMAL CONSUMPTION.

For Reference Only