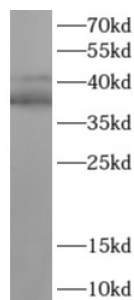


T-Cell Acute Lymphocytic Leukemia Protein 1 (TAL1) Antibody

Catalogue No.: abx218868



WB analysis of Jurkat cells, using TAL1 antibody (1/1000 dilution).

T-Cell Acute Lymphocytic Leukemia Protein 1 (TAL1) Antibody is a Rabbit Polyclonal antibody for the detection of TAL1.

T-cell acute lymphocytic leukemia protein 1 (TAL1) also named Stem cell protein, T-cell leukemia/lymphoma protein 5. It is specifically expressed in leukemic stem cell, implicated in the genesis of hemopoietic malignancies. It may play an important role in hemopoietic differentiation, serving as a positive regulator of erythroid differentiation. The 38kd, 44kd bands recognized by antibody are the phosphorylated forms of TAL1 and its isoforms.

Target: T-Cell Acute Lymphocytic Leukemia Protein 1 (TAL1)

Clonality: Polyclonal

Reactivity: Human

Tested Applications: ELISA, WB

Host: Rabbit

Recommended dilutions: WB: 1/200 - 1/2000. Optimal dilutions/concentrations should be determined by the end user.

Conjugation: Unconjugated

Immunogen: T-cell acute lymphocytic leukemia 1

Isotype: IgG

Form: Liquid

Purity: ≥ 95% (SDS-PAGE)

Purification: Purified by immunogen affinity chromatography.

Storage: Aliquot and store at -20°C. Avoid repeated freeze/thaw cycles.

Datasheet

Version: 2.0.0

Revision date: 17 Sep 2025



Validity: 12 months.

UniProt Primary AC: P17542 ([UniProt](#), [ExPASy](#))

Gene Symbol: TAL1

GeneID: [6886](#)

OMIM: [187040](#)

HGNC: 11556

KEGG: hsa:6886

Ensembl: ENSG00000162367

String: [9606.ENSP00000294339](#)

Molecular Weight: Observed MW: 38, 44 kDa

Buffer: PBS, pH 7.3, with 0.02% sodium azide and 50% glycerol.

Concentration: 2 mg/ml

Note: THIS PRODUCT IS FOR RESEARCH USE ONLY. NOT FOR USE IN DIAGNOSTIC, THERAPEUTIC OR COSMETIC PROCEDURES. NOT FOR HUMAN OR ANIMAL CONSUMPTION.