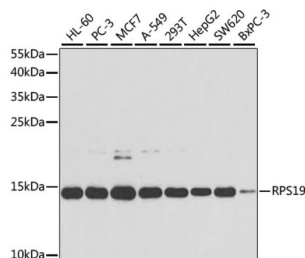


Ribosomal Protein S19 (RPS19) Antibody

Catalogue No.: abx001639



Western blot analysis of extracts of various cell lines using RPS19 Antibody (1/1000 dilution).

RPS19 Antibody is a Rabbit Polyclonal antibody against RPS19. Ribosomes, the organelles that catalyze protein synthesis, consist of a small 40S subunit and a large 60S subunit. Together these subunits are composed of 4 RNA species and approximately 80 structurally distinct proteins. This gene encodes a ribosomal protein that is a component of the 40S subunit. The protein belongs to the S19E family of ribosomal proteins. It is located in the cytoplasm. Mutations in this gene cause Diamond-Blackfan anemia (DBA), a constitutional erythroblastopenia characterized by absent or decreased erythroid precursors, in a subset of patients. This suggests a possible extra-ribosomal function for this gene in erythropoietic differentiation and proliferation, in addition to its ribosomal function. Higher expression levels of this gene in some primary colon carcinomas compared to matched normal colon tissues has been observed. As is typical for genes encoding ribosomal proteins, there are multiple processed pseudogenes of this gene dispersed through the genome.

Target:	Ribosomal Protein S19 (RPS19)
Clonality:	Polyclonal
Reactivity:	Human
Tested Applications:	WB
Host:	Rabbit
Recommended dilutions:	WB: 1/500 - 1/2000. Optimal dilutions/concentrations should be determined by the end user.
Conjugation:	Unconjugated
Immunogen:	Recombinant fusion protein corresponding to human RPS19
Isotype:	IgG
Form:	Liquid
Purification:	Purified by affinity chromatography.
Storage:	Aliquot and store at -20°C. Avoid repeated freeze/thaw cycles.

Datasheet

Version: 4.0.0

Revision date: 27 Jul 2025



UniProt Primary AC: P39019 ([UniProt](#), [ExPASy](#))

Gene Symbol: RPS19

GeneID: [6223](#)

NCBI Accession: NP_001013.1

KEGG: hsa:6223

String: [9606.ENSP00000470972](#)

Molecular Weight: Calculated MW: 16 kDa
Observed MW: 16 kDa

Buffer: PBS, pH 7.3, containing 0.02% sodium azide, 50% glycerol.

Concentration: 1 mg/ml

Note: THIS PRODUCT IS FOR RESEARCH USE ONLY. NOT FOR USE IN DIAGNOSTIC, THERAPEUTIC OR COSMETIC PROCEDURES. NOT FOR HUMAN OR ANIMAL CONSUMPTION.

For Reference Only