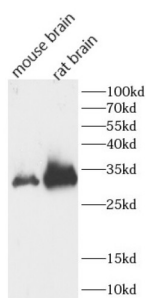


## Calretinin (CALB2) Antibody

Catalogue No.: abx148818



WB analysis of various lysates, using calretinin antibody (1/1000 dilution).

Calretinin (CALB2) Antibody is a Rabbit Polyclonal antibody for the detection of Calretinin.

Calretinin (calretinin), is an intracellular calcium-binding protein belonging to the troponin C superfamily. Members of this protein family have six EF-hand domains which bind calcium. This protein plays a role in diverse cellular functions, including message targeting and intracellular calcium buffering. It also functions as a modulator of neuronal excitability, and is a diagnostic marker for some human diseases, including Hirschsprung disease and some cancers. Calretinin is a useful marker for differentiating malignant mesothelioma from carcinomas.

**Target:** Calretinin (CALB2)

**Clonality:** Polyclonal

**Reactivity:** Human, Mouse, Rat

**Tested Applications:** ELISA, WB

**Host:** Rabbit

**Recommended dilutions:** WB: 1/500 - 1/2000. Optimal dilutions/concentrations should be determined by the end user.

**Conjugation:** Unconjugated

**Immunogen:** calbindin 2

**Isotype:** IgG

**Form:** Liquid

**Purity:** ≥ 95% (SDS-PAGE)

**Purification:** Purified by immunogen affinity chromatography.

# Datasheet

Version: 3.0.0

Revision date: 06 Sep 2025



**Storage:** Aliquot and store at -20°C. Avoid repeated freeze/thaw cycles.

**Validity:** 12 months.

**UniProt Primary AC:** P22676 ([UniProt](#), [ExPASy](#))

**Gene Symbol:** CALB2

**GeneID:** [794](#)

**OMIM:** [114051](#)

**NCBI Accession:** NP\_001731.2

**HGNC:** 1435

**KEGG:** hsa:794

**Ensembl:** ENSG00000172137

**String:** [9606.ENSP00000307508](#)

**Molecular Weight:** Observed MW: 32 kDa

**Buffer:** PBS, pH 7.3, with 0.02% sodium azide and 50% glycerol.

**Concentration:** 2 mg/ml

**Note:** THIS PRODUCT IS FOR RESEARCH USE ONLY. NOT FOR USE IN DIAGNOSTIC, THERAPEUTIC OR COSMETIC PROCEDURES. NOT FOR HUMAN OR ANIMAL CONSUMPTION.