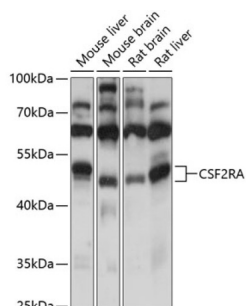


Colony Stimulating Factor 2 Receptor Alpha (CSF2RA) Antibody

Catalogue No.: abx001651



Western blot analysis of extracts of various cell lines using CSF2RA Antibody (1/500 dilution).

CSF2RA Antibody is a Rabbit Polyclonal antibody against CSF2RA. The protein encoded by this gene is the alpha subunit of the heterodimeric receptor for colony stimulating factor 2, a cytokine which controls the production, differentiation, and function of granulocytes and macrophages. The encoded protein is a member of the cytokine family of receptors. This gene is found in the pseudoautosomal region (PAR) of the X and Y chromosomes. Multiple transcript variants encoding different isoforms have been found for this gene, with some of the isoforms being membrane-bound and others being soluble. [provided by RefSeq, Jul 2008].

Target: Colony Stimulating Factor 2 Receptor Alpha (CSF2RA)

Clonality: Polyclonal

Reactivity: Mouse, Rat

Tested Applications: WB

Host: Rabbit

Recommended dilutions: WB: 1/500 - 1/2000. Optimal dilutions/concentrations should be determined by the end user.

Conjugation: Unconjugated

Immunogen: Recombinant fusion protein corresponding to human CSF2RA

Isotype: IgG

Form: Liquid

Purification: Purified by affinity chromatography.

Storage: Aliquot and store at -20°C. Avoid repeated freeze/thaw cycles.

UniProt Primary AC: P15509 ([UniProt](#), [ExPASy](#))

Datasheet

Version: 4.0.0

Revision date: 06 Jun 2025



Gene Symbol: CSF2RA

GeneID: [1438](#)

NCBI Accession: NP_758448.1

Molecular Weight: Calculated MW: 26 kDa/31 kDa/32 kDa/38 kDa/43 kDa/46 kDa/49 kDa
Observed MW: 48 kDa

Buffer: PBS, pH 7.3, containing 0.01% thiomersal, 50% glycerol.

Concentration: 1 mg/ml

Note: THIS PRODUCT IS FOR RESEARCH USE ONLY. NOT FOR USE IN DIAGNOSTIC, THERAPEUTIC OR COSMETIC PROCEDURES. NOT FOR HUMAN OR ANIMAL CONSUMPTION.

For Reference Only