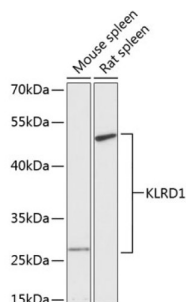


## Natural Killer Cells Antigen CD94 (KLRD1) Antibody

Catalogue No.: abx001656



Western blot analysis of extracts of various cell lines using KLRD1 Antibody (1/3000 dilution).

KLRD1 Antibody is a Rabbit Polyclonal antibody against KLRD1. Natural killer (NK) cells are a distinct lineage of lymphocytes that mediate cytotoxic activity and secrete cytokines upon immune stimulation. Several genes of the C-type lectin superfamily, including members of the NKG2 family, are expressed by NK cells and may be involved in the regulation of NK cell function. KLRD1 (CD94) is an antigen preferentially expressed on NK cells and is classified as a type II membrane protein because it has an external C terminus. Three transcript variants encoding two different isoforms have been found for this gene. [provided by RefSeq, Jul 2008].

**Target:** Natural Killer Cells Antigen CD94 (KLRD1)

**Clonality:** Polyclonal

**Reactivity:** Mouse, Rat

**Tested Applications:** WB

**Host:** Rabbit

**Recommended dilutions:** WB: 1/500 - 1/2000. Optimal dilutions/concentrations should be determined by the end user.

**Conjugation:** Unconjugated

**Immunogen:** Recombinant fusion protein corresponding to human KLRD1

**Isotype:** IgG

**Form:** Liquid

**Purification:** Purified by affinity chromatography.

**Storage:** Aliquot and store at -20°C. Avoid repeated freeze/thaw cycles.

**UniProt Primary AC:** Q13241 ([UniProt](#), [ExPASy](#))

# Datasheet

Version: 3.0.0

Revision date: 29 Mar 2025



**Gene Symbol:** KLRD1

**GeneID:** [3824](#)

**NCBI Accession:** NP\_002253.2

**KEGG:** hsa:3824

**String:** [9606.ENSP00000371333](#)

**Molecular Weight:** Calculated MW: 17 kDa/20 kDa  
Observed MW: 43 kDa/28 kDa

**Buffer:** PBS, pH 7.3, containing 0.02% sodium azide, 50% glycerol.

**Concentration:** 1 mg/ml

**Note:** THIS PRODUCT IS FOR RESEARCH USE ONLY. NOT FOR USE IN DIAGNOSTIC, THERAPEUTIC OR COSMETIC PROCEDURES. NOT FOR HUMAN OR ANIMAL CONSUMPTION.

For Reference Only