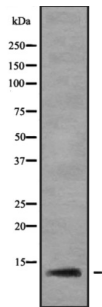


Ribosomal Protein L37 (RPL37) Antibody

Catalogue No.: abx218358



Western blot analysis of RPL37 using Jurkat whole cell lysates.

RPL37 Antibody is a Rabbit Polyclonal against RPL37.

Target: Ribosomal Protein L37 (RPL37)**Clonality:** Polyclonal**Reactivity:** Human, Mouse, Rat**Tested Applications:** WB**Host:** Rabbit**Recommended dilutions:** WB: 1/1000 - 1/3000. Optimal dilutions/concentrations should be determined by the end user.**Conjugation:** Unconjugated**Immunogen:** Synthesised peptide derived from human RPL37**Form:** Liquid**Purification:** Purified by affinity chromatography using epitope-specific peptide.**Storage:** Aliquot and store at -20°C. Avoid repeated freeze/thaw cycles.**UniProt Primary AC:** P61927 ([UniProt](#), [ExpASY](#))**Gene Symbol:** RPL37**GeneID:** [6167](#)**KEGG:** hsa:6167

Datasheet

Version: 2.0.0

Revision date: 02 Oct 2025



Ensembl: ENSG00000145592

String: [9606.ENSP00000274242](#)

Molecular Weight: 11 kDa

Buffer: PBS, pH 7.4, 150 mM NaCl, 0.02% sodium azide and 50% glycerol.

Specificity: RPL37 Antibody detects endogenous levels of total RPL37

Concentration: 1 mg/ml

Note: THIS PRODUCT IS FOR RESEARCH USE ONLY. NOT FOR USE IN DIAGNOSTIC, THERAPEUTIC OR COSMETIC PROCEDURES. NOT FOR HUMAN OR ANIMAL CONSUMPTION.

For Reference Only