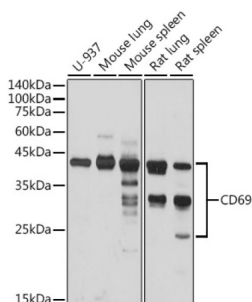


Early Activation Antigen CD69 (CD69) Antibody

Catalogue No.: abx001662



Western blot analysis of various lysates using CD69 Antibody at 1/1000 dilution. Secondary antibody: HRP-conjugated Goat anti-Rabbit IgG (H+L) at 1/10000 dilution. Lysates/proteins: 25 µg per lane. Blocking buffer: 3% nonfat dry milk in TBST. Exposure time: 10s.

CD69 Antibody is a Rabbit Polyclonal antibody against CD69. This gene encodes a member of the calcium dependent lectin superfamily of type II transmembrane receptors. Expression of the encoded protein is induced upon activation of T lymphocytes, and may play a role in proliferation. Furthermore, the protein may act to transmit signals in natural killer cells and platelets. [provided by RefSeq, Aug 2011].

| | |
|-------------------------------|--|
| Target: | Early Activation Antigen CD69 (CD69) |
| Clonality: | Polyclonal |
| Reactivity: | Human, Mouse, Rat |
| Tested Applications: | ELISA, WB |
| Host: | Rabbit |
| Recommended dilutions: | ELISA: 1 µg/ml, WB: 1/500 - 1/1000. Optimal dilutions/concentrations should be determined by the end user. |
| Conjugation: | Unconjugated |
| Immunogen: | Recombinant fusion protein containing a sequence within amino acids 1-80 of human CD69. |
| Isotype: | IgG |
| Form: | Liquid |
| Purification: | Purified by affinity chromatography. |
| Storage: | Aliquot and store at -20°C. Avoid repeated freeze/thaw cycles. |
| UniProt Primary AC: | Q07108 (UniProt , ExPASy) |
| Gene Symbol: | CD69 |

Datasheet

Version: 3.0.0

Revision date: 20 Jun 2025



GeneID: [969](#)

NCBI Accession: NP_001772.1

KEGG: hsa:969

String: [9606.ENSP00000228434](#)

Molecular Weight: Calculated MW: 23 kDa
Observed MW: 25-45 kDa

Buffer: PBS, pH 7.3, containing 0.09% sodium azide, 50% glycerol.

Concentration: > 0.2 mg/ml

Note: THIS PRODUCT IS FOR RESEARCH USE ONLY. NOT FOR USE IN DIAGNOSTIC, THERAPEUTIC OR COSMETIC PROCEDURES. NOT FOR HUMAN OR ANIMAL CONSUMPTION.

For Reference Only