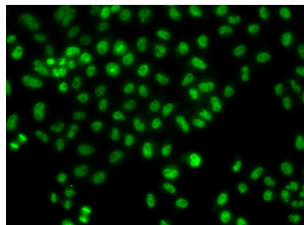


LIM/Homeobox Protein Lhx8 (LHX8) Antibody

Catalogue No.: abx001663



Immunofluorescence analysis of HeLa cells using LHX8 Antibody

LHX8 Antibody is a Rabbit Polyclonal antibody against LHX8. The Protein encoded by this gene is a member of the LIM Homeobox family of Proteins, which are involved in patterning and differentiation of various tissue types. These Proteins contain two tandemly repeated cysteine-rich double-zinc finger motifs known as LIM domains, in addition to a DNA-binding homeodomain. This family member is a transcription factor that plays a role in tooth morphogenesis. It is also involved in oogenesis and in neuronal differentiation. This gene is a candidate gene for cleft palate, and it is also associated with odontoma formation. Alternative splicing of this gene results in multiple transcript variants. [provided by RefSeq, Jan 2012].

Target:	LIM/Homeobox Protein Lhx8 (LHX8)
Clonality:	Polyclonal
Reactivity:	Human
Tested Applications:	IF/ICC
Host:	Rabbit
Recommended dilutions:	IF/ICC: 1/50 - 1/200. Optimal dilutions/concentrations should be determined by the end user.
Conjugation:	Unconjugated
Immunogen:	Recombinant fusion protein corresponding to human LHX8
Isotype:	IgG
Form:	Liquid
Purification:	Purified by affinity chromatography.
Storage:	Aliquot and store at -20°C. Avoid repeated freeze/thaw cycles.
UniProt Primary AC:	Q68G74 (UniProt , ExPASy)

Datasheet

Version: 4.0.0
Revision date: 08 Oct 2025



Gene Symbol:	LHX8
GeneID:	431707
OMIM:	604425
NCBI Accession:	NP_001001933.1
HGNC:	28838
KEGG:	hsa:431707
Ensembl:	ENSG00000162624
String:	9606.ENSP00000294638
Buffer:	PBS, pH 7.3, containing 0.02% sodium azide, 50% glycerol.
Concentration:	1 mg/ml
Note:	THIS PRODUCT IS FOR RESEARCH USE ONLY. NOT FOR USE IN DIAGNOSTIC, THERAPEUTIC OR COSMETIC PROCEDURES. NOT FOR HUMAN OR ANIMAL CONSUMPTION.

For Reference Only