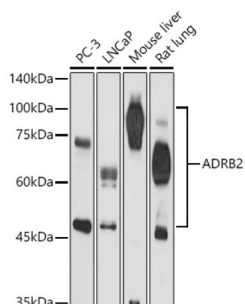


## Beta-2 Adrenergic Receptor (ADRB2) Antibody

Catalogue No.: abx001665



Western blot analysis of extracts of various cell lines using ADRB2 Antibody (1/500 dilution).

ADRB2 Antibody is a Rabbit Polyclonal antibody against ADRB2. This gene encodes beta-2-adrenergic receptor which is a member of the G protein-coupled receptor superfamily. This receptor is directly associated with one of its ultimate effectors, the class C L-type calcium channel Ca(V)1.2. This receptor-channel complex also contains a G protein, an adenylyl cyclase, cAMP-dependent kinase, and the counterbalancing phosphatase, PP2A. The assembly of the signaling complex provides a mechanism that ensures specific and rapid signaling by this G protein-coupled receptor. This gene is intronless. Different polymorphic forms, point mutations, and/or downregulation of this gene are associated with nocturnal asthma, obesity and type 2 diabetes.

**Target:** Beta-2 Adrenergic Receptor (ADRB2)

**Clonality:** Polyclonal

**Reactivity:** Human, Mouse, Rat

**Tested Applications:** WB

**Host:** Rabbit

**Recommended dilutions:** WB: 1/500 - 1/2000. Optimal dilutions/concentrations should be determined by the end user.

**Conjugation:** Unconjugated

**Immunogen:** A synthetic peptide corresponding to human ADRB2

**Isotype:** IgG

**Form:** Liquid

**Purification:** Purified by affinity chromatography.

**Storage:** Aliquot and store at -20°C. Avoid repeated freeze/thaw cycles.

**UniProt Primary AC:** P07550 ([UniProt](#), [ExPASy](#))

# Datasheet

Version: 3.0.0  
Revision date: 23 Jun 2025



**Gene Symbol:** ADRB2

**GeneID:** [154](#)

**NCBI Accession:** NP\_000015.1

**KEGG:** hsa:154

**String:** [9606.ENSP00000305372](#)

**Molecular Weight:** Calculated MW: 46 kDa  
Observed MW: 50-100 kDa

**Buffer:** PBS, pH 7.3, containing 0.02% sodium azide, 50% glycerol.

**Concentration:** 1 mg/ml

**Note:** THIS PRODUCT IS FOR RESEARCH USE ONLY. NOT FOR USE IN DIAGNOSTIC, THERAPEUTIC OR COSMETIC PROCEDURES. NOT FOR HUMAN OR ANIMAL CONSUMPTION.

For Reference Only