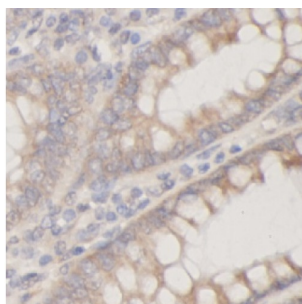


Alpha-2-Macroglobulin (A2M) Antibody

Catalogue No.: abx146787



IHC-P analysis of human colon cancer tissue, using A2MG antibody (1/100 dilution).

Alpha-2-Macroglobulin (A2M) Antibody is a Rabbit Polyclonal antibody for the detection of Alpha-2-macroglobulin.

Alpha-2-macroglobulin, also known as α 2-macroglobulin (α 2M or A2M), is a protein abundant in the plasma of vertebrates and several invertebrates. A2M is an evolutionarily conserved arm of the innate immune system. It also mediates the proliferation of T cells and macrophages. A2M acts as a nonspecific protease inhibitor involved in the host defense mechanism that inactivates both endogenous and exogenous proteases, including trypsin, thrombin and collagenase. Even though A2M is produced predominantly by the liver, it may also be expressed in the reproductive tract, heart, and brain, and may have important roles in many physiological processes and medical illnesses including Alzheimer's disease.

Target: Alpha-2-Macroglobulin (A2M)

Clonality: Polyclonal

Reactivity: Human

Tested Applications: ELISA, IHC

Host: Rabbit

Recommended dilutions: IHC: 1/20 - 1/200. Optimal dilutions/concentrations should be determined by the end user.

Conjugation: Unconjugated

Immunogen: alpha-2-macroglobulin

Isotype: IgG

Form: Liquid

Purity: \geq 95% (SDS-PAGE)

Purification: Purified by immunogen affinity chromatography.

Datasheet

Version: 2.0.0
Revision date: 05 Sep 2025



Storage: Aliquot and store at -20°C. Avoid repeated freeze/thaw cycles.

Validity: 12 months.

UniProt Primary AC: P01023 ([UniProt](#), [ExPASy](#))

Gene Symbol: A2M

GeneID: [2](#)

OMIM: [103950](#)

HGNC: 7

KEGG: hsa:2

Ensembl: ENSG00000175899

String: [9606.ENSP00000323929](#)

Buffer: PBS, pH 7.3, with 0.02% sodium azide and 50% glycerol.

Concentration: 2 mg/ml

Note: THIS PRODUCT IS FOR RESEARCH USE ONLY. NOT FOR USE IN DIAGNOSTIC, THERAPEUTIC OR COSMETIC PROCEDURES. NOT FOR HUMAN OR ANIMAL CONSUMPTION.