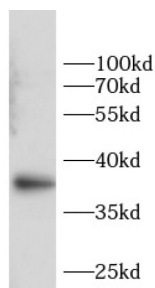
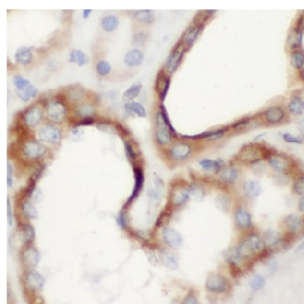


Annexin A2 (ANXA2) Antibody

Catalogue No.: abx146597



WB analysis of mouse lung, using Annexin A2 antibody (1/1000 dilution).



IHC-P analysis of human kidney tissue, using Annexin A2 antibody (1/200 dilution).

Annexin A2 (ANXA2) Antibody is a Rabbit Polyclonal antibody for the detection of Annexin A2.

This gene encodes a member of the annexin family. Members of this calcium-dependent phospholipid-binding protein family play a role in the regulation of cellular growth and in signal transduction pathways. This protein functions as an autocrine factor which heightens osteoclast formation and bone resorption. This gene has three pseudogenes located on chromosomes 4, 9 and 10, respectively. Multiple alternatively spliced transcript variants encoding different isoforms have been found for this gene.

Target: Annexin A2 (ANXA2)

Clonality: Polyclonal

Reactivity: Human, Mouse, Rat

Tested Applications: ELISA, WB, IHC

Host: Rabbit

Recommended dilutions: WB: 1/500 - 1/2000, IHC: 1/50 - 1/200. Optimal dilutions/concentrations should be determined by the end user.

Conjugation: Unconjugated

Immunogen: annexin A2

Isotype: IgG

Datasheet

Version: 3.0.0
Revision date: 05 Sep 2025



Form:	Liquid
Purity:	≥ 95% (SDS-PAGE)
Purification:	Purified by immunogen affinity chromatography.
Storage:	Aliquot and store at -20°C. Avoid repeated freeze/thaw cycles.
Validity:	12 months.
UniProt Primary AC:	P07355 (UniProt , ExPASy)
Gene Symbol:	ANXA2
GeneID:	302
OMIM:	151740
HGNC:	537
KEGG:	hsa:302
Ensembl:	ENSG00000182718
String:	9606.ENSP00000346032
Molecular Weight:	Observed MW: 38 kDa
Buffer:	PBS, pH 7.3, with 0.02% sodium azide and 50% glycerol.
Concentration:	2 mg/ml
Note:	THIS PRODUCT IS FOR RESEARCH USE ONLY. NOT FOR USE IN DIAGNOSTIC, THERAPEUTIC OR COSMETIC PROCEDURES. NOT FOR HUMAN OR ANIMAL CONSUMPTION.