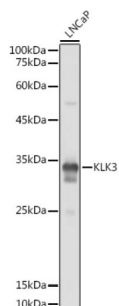
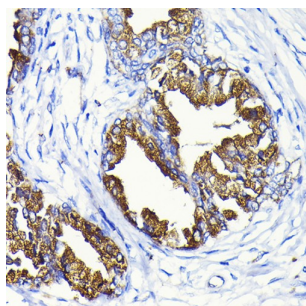


Prostate-Specific Antigen / PSA (KLK3) Antibody

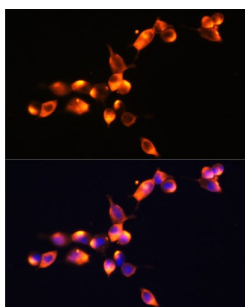
Catalogue No.: abx001669



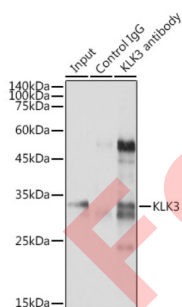
Western blot analysis of lysates from LNCaP cells, using KLK1B3 Antibody at 1/1000 dilution. Secondary antibody: HRP-conjugated Goat anti-Rabbit IgG (H+L) at 1/10000 dilution. Lysates/proteins: 25 µg per lane. Blocking buffer: 3% nonfat dry milk in TBST. Exposure time: 1s.



Immunohistochemistry analysis of paraffin-embedded Human prostate cancer using KLK1B3 Antibody at dilution of 1/100 (40x lens). High pressure antigen retrieval performed in 0.01 M Citrate buffer (pH 6.0) prior to IHC staining.



Immunofluorescence analysis of LNCaP cells using KLK1B3 Antibody at dilution of 1/100 (40x lens). Secondary antibody: Cy3-conjugated Goat anti-Rabbit IgG (H+L) at 1/500 dilution. Blue: DAPI for nuclear staining.



Immunoprecipitation analysis of 300 µg extracts of LNCaP cells using 3 µg KLK1B3 antibody. Western blot was performed from the immunoprecipitate using KLK1B3 antibody at a dilution of 1/2000.

KLK3 Antibody is a Rabbit Polyclonal antibody against KLK3. Kallikreins are a subgroup of serine proteases having diverse physiological functions. Growing evidence suggests that many kallikreins are implicated in carcinogenesis and some have potential as novel cancer and other disease biomarkers. This gene is one of the fifteen kallikrein subfamily members located in a cluster on chromosome 19. Its protein product is a protease present in seminal plasma. It is thought to function normally in the liquefaction of seminal coagulum, presumably by hydrolysis of the high molecular mass seminal vesicle protein. Serum level of this protein, called PSA in the clinical setting, is useful in the diagnosis and monitoring of prostatic carcinoma. Alternate splicing of this gene generates several transcript variants encoding different isoforms.

Datasheet

Version: 8.0.0
Revision date: 09 Oct 2025



Target:	Prostate-Specific Antigen / PSA (KLK3)
Research Area:	Tumour Immunity, Reproductive Science
Clonality:	Polyclonal
Reactivity:	Human, Mouse
Tested Applications:	ELISA, WB, IHC, IF/ICC, IP
Host:	Rabbit
Recommended dilutions:	ELISA: 1 µg/ml, WB: 1/500 - 1/1000, IHC-P: 1/50 - 1/200, IF/ICC: 1/50 - 1/200, IP: 0.5 µg - 4 µg antibody per 200 µg - 400 µg extracts of whole cells. Not tested in IHC-F. Optimal dilutions/concentrations should be determined by the end user.
Conjugation:	Unconjugated
Immunogen:	Recombinant protein corresponding to KLK1B3. The exact sequence is proprietary.
Isotype:	IgG
Form:	Liquid
Purification:	Purified by affinity chromatography.
Storage:	Aliquot and store at -20°C. Avoid repeated freeze/thaw cycles.
UniProt Primary AC:	P07288 (UniProt , ExPASy)
Gene Symbol:	KLK3
GeneID:	354
OMIM:	176820
NCBI Accession:	NP_001639.1
HGNC:	6364
KEGG:	hsa:354
Ensembl:	ENSG00000142515
String:	9606.ENSP00000314151

Datasheet

Version: 8.0.0

Revision date: 09 Oct 2025



Molecular Weight: Calculated MW: 29 kDa
Observed MW: 34 kDa

Buffer: PBS, pH 7.3, containing 0.05% Proclin-300, 50% glycerol.

Concentration: > 0.2 mg/ml

Note: THIS PRODUCT IS FOR RESEARCH USE ONLY. NOT FOR USE IN DIAGNOSTIC, THERAPEUTIC OR COSMETIC PROCEDURES. NOT FOR HUMAN OR ANIMAL CONSUMPTION.

For Reference Only