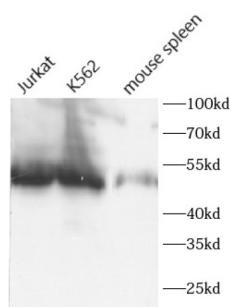


Antigen-Presenting Glycoprotein CD1d (CD1D) Antibody

Catalogue No.: abx149057



WB analysis of various lysates, using CD1D antibody (1/1000 dilution).

Antigen-Presenting Glycoprotein CD1d (CD1D) Antibody is a Rabbit Polyclonal antibody for the detection of CD1D.

CD1d is a member of the CD1 family of transmembrane glycoproteins, which are structurally related to the major histocompatibility complex (MHC) proteins and form heterodimers with beta-2-microglobulin. CD1d is an antigen-presenting protein that binds self and non-self glycolipids and presents them to T-cell receptors on NKT cells. When activated, NKT cells rapidly produce Th1 and Th2 cytokines. The molecular weight of unglycosylated CD1d is 38 kDa, while glycosylated form of CD1d is 48-50 kDa.

Target: Antigen-Presenting Glycoprotein CD1d (CD1D)

Clonality: Polyclonal

Reactivity: Human, Mouse

Tested Applications: ELISA, WB

Host: Rabbit

Recommended dilutions: WB: 1/500 - 1/2000. Optimal dilutions/concentrations should be determined by the end user.

Conjugation: Unconjugated

Immunogen: CD1d molecule

Isotype: IgG

Form: Liquid

Purity: ≥ 95% (SDS-PAGE)

Purification: Purified by immunogen affinity chromatography.

Datasheet

Version: 2.0.0
Revision date: 14 Jun 2025



Storage: Aliquot and store at -20°C. Avoid repeated freeze/thaw cycles.

Validity: 12 months.

UniProt Primary AC: P15813 ([UniProt](#), [ExPASy](#))

Gene Symbol: CD1D

GeneID: [912](#)

OMIM: [188410](#)

HGNC: 1637

KEGG: hsa:912

Ensembl: ENSG00000158473

String: [9606.ENSP00000357153](#)

Molecular Weight: Observed MW: 50-55 kDa

Buffer: PBS, pH 7.3, with 0.02% sodium azide and 50% glycerol.

Concentration: 2 mg/ml

Note: THIS PRODUCT IS FOR RESEARCH USE ONLY. NOT FOR USE IN DIAGNOSTIC, THERAPEUTIC OR COSMETIC PROCEDURES. NOT FOR HUMAN OR ANIMAL CONSUMPTION.