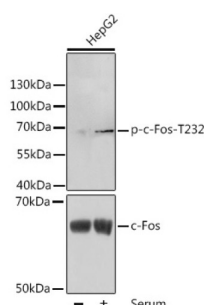


Proto-Oncogene C-Fos (pT232) (FOS) Antibody

Catalogue No.: abx000123



Western blot analysis of lysates from HepG2 cells, using Phospho-c-Fos-T232 Antibody at 1/1000 dilution or c-Fos antibody. HepG2 cells were treated by 10% FBS for after serum-starvation overnight. Secondary antibody: HRP-conjugated Goat anti-Rabbit IgG (H+L) at 1/10000 dilution. Lysates/proteins: 25 µg per lane. Blocking buffer: 3% BSA.

FOS (pT232) Antibody is a Rabbit Polyclonal antibody against FOS (pT232). The Fos gene family consists of 4 members: FOS, FOSB, FOSL1, and FOSL2. These genes encode leucine zipper proteins that can dimerize with proteins of the JUN family, thereby forming the transcription factor complex AP-1. As such, the FOS proteins have been implicated as regulators of cell proliferation, differentiation, and transformation. In some cases, expression of the FOS gene has also been associated with apoptotic cell death.

Target:	Proto-Oncogene C-Fos (pT232) (FOS)
Clonality:	Polyclonal
Reactivity:	Human, Mouse, Rat
Tested Applications:	ELISA, WB
Host:	Rabbit
Recommended dilutions:	ELISA: 1 µg/ml, WB: 1/500 - 1/2000. Optimal dilutions/concentrations should be determined by the end user.
Conjugation:	Unconjugated
Immunogen:	A synthetic phosphorylated peptide around T232 of human c-Fos.
Isotype:	IgG
Form:	Liquid
Purification:	Purified by affinity chromatography.
Storage:	Aliquot and store at -20°C. Avoid repeated freeze/thaw cycles.
UniProt Primary AC:	P01100 (UniProt , ExPASy)

Datasheet

Version: 4.0.0

Revision date: 06 Mar 2025



Gene Symbol: FOS

GeneID: [2353](#)

NCBI Accession: NP_005243.1

KEGG: hsa:2353

String: [9606.ENSP00000306245](#)

Molecular Weight: Calculated MW: 41 kDa
Observed MW: 62 kDa

Buffer: PBS, pH 7.3, containing 0.02% sodium azide, 50% glycerol.

Concentration: > 0.2 mg/ml

Note: THIS PRODUCT IS FOR RESEARCH USE ONLY. NOT FOR USE IN DIAGNOSTIC, THERAPEUTIC OR COSMETIC PROCEDURES. NOT FOR HUMAN OR ANIMAL CONSUMPTION.

For Reference Only