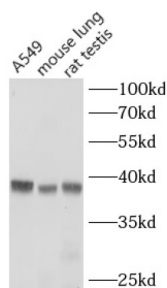
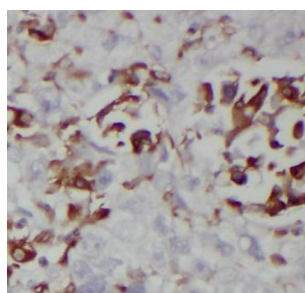


Protein Wnt-3a (WNT3A) Antibody

Catalogue No.: abx218011



WB analysis of various lysates, using WNT3A antibody (1/800 dilution).



IHC-P analysis of human lung cancer tissue, using WNT3A antibody (1/100 dilution).

Protein Wnt-3a (WNT3A) Antibody is a Rabbit Polyclonal antibody for the detection of WNT3A.

The WNT gene family consists of structurally related genes which encode secreted signaling proteins. These proteins have been implicated in oncogenesis and in several developmental processes, including regulation of cell fate and patterning during embryogenesis. This gene is a member of the WNT gene family. It encodes a protein which shows 96% amino acid identity to mouse Wnt3A protein, and 84% to human WNT3 protein, another WNT gene product. This gene is clustered with WNT14 gene, another family member, in chromosome 1q42 region.

Target: Protein Wnt-3a (WNT3A)

Clonality: Polyclonal

Reactivity: Human, Mouse, Rat

Tested Applications: ELISA, WB, IHC

Host: Rabbit

Recommended dilutions: WB: 1/500 - 1/2000, IHC: 1/50 - 1/200. Optimal dilutions/concentrations should be determined by the end user.

Conjugation: Unconjugated

Immunogen: WNT3A

Datasheet

Version: 2.0.0
Revision date: 16 Jul 2025



Isotype:	IgG
Form:	Liquid
Purity:	≥ 95% (SDS-PAGE)
Purification:	Purified by immunogen affinity chromatography.
Storage:	Aliquot and store at -20°C. Avoid repeated freeze/thaw cycles.
Validity:	12 months.
UniProt Primary AC:	P56704 (UniProt , ExPASy)
Gene Symbol:	WNT3A
GeneID:	89780
OMIM:	606359
HGNC:	15983
KEGG:	hsa:89780
Ensembl:	ENSG00000154342
String:	9606.ENSP00000284523
Molecular Weight:	Observed MW: 39 kDa
Buffer:	PBS, pH 7.3, with 0.02% sodium azide and 50% glycerol.
Concentration:	2 mg/ml
Note:	THIS PRODUCT IS FOR RESEARCH USE ONLY. NOT FOR USE IN DIAGNOSTIC, THERAPEUTIC OR COSMETIC PROCEDURES. NOT FOR HUMAN OR ANIMAL CONSUMPTION.