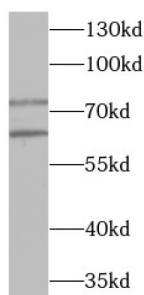
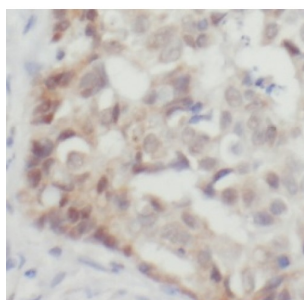


## Yin Yang 1 (YY1) Antibody

Catalogue No.: abx219396



WB analysis of A549 cells, using YY1 antibody (1/1000 dilution).



IHC-P analysis of human breast cancer tissue, using YY1 antibody (1/100 dilution).

Yin Yang 1 (YY1) Antibody is a Rabbit Polyclonal antibody for the detection of YY1.

Multifunctional transcription factor that exhibits positive and negative control on a large number of cellular and viral genes by binding to sites overlapping the transcription start site. Binds to the consensus sequence 5'-CCGCCATNTT-3'; some genes have been shown to contain a longer binding motif allowing enhanced binding; the initial CG dinucleotide can be methylated greatly reducing the binding affinity. The effect on transcription regulation is depending upon the context in which it binds and diverse mechanisms of action include direct activation or repression, indirect activation or repression via cofactor recruitment, or activation or repression by disruption of binding sites or conformational DNA changes. Its activity is regulated by transcription factors and cytoplasmic proteins that have been shown to abrogate or completely inhibit YY1-mediated activation or repression. For example, it acts as a repressor in absence of adenovirus E1A protein but as an activator in its presence. Acts synergistically with the SMAD1 and SMAD4 in bone morphogenetic protein (BMP) -mediated cardiac-specific gene expression (PubMed:15329343). Binds to SMAD binding elements (SBEs) (5'-GTCT/AGAC-3') within BMP response element (BMPRE) of cardiac activating regions. May play an important role in development and differentiation. Proposed to recruit the PRC2/EED-EZH2 complex to target genes that are transcriptional repressed. Involved in DNA repair. In vitro, binds to DNA recombination intermediate structures (Holliday junctions). Proposed core component of the chromatin remodeling INO80 complex which is involved in transcriptional regulation, DNA replication and probably DNA repair; proposed to target the INO80 complex to YY1-responsive elements.

<b>Target:</b>	Yin Yang 1 (YY1)
<b>Clonality:</b>	Polyclonal
<b>Reactivity:</b>	Human, Mouse, Rat, Rabbit, Pig, Monkey, Zebrafish, Hamster
<b>Tested Applications:</b>	ELISA, WB, IHC

# Datasheet

Version: 2.0.0  
Revision date: 28 Aug 2025



**Host:** Rabbit

**Recommended dilutions:** WB: 1/500 - 1/2000, IHC: 1/50 - 1/500. Optimal dilutions/concentrations should be determined by the end user.

**Conjugation:** Unconjugated

**Immunogen:** YY1 transcription factor

**Isotype:** IgG

**Form:** Liquid

**Purity:** ≥ 95% (SDS-PAGE)

**Purification:** Purified by immunogen affinity chromatography.

**Storage:** Aliquot and store at -20°C. Avoid repeated freeze/thaw cycles.

**Validity:** 12 months.

**UniProt Primary AC:** P25490 ([UniProt](#), [ExPASy](#))

**Gene Symbol:** YY1

**GeneID:** [7528](#)

**OMIM:** [600013](#)

**HGNC:** 12856

**KEGG:** hsa:7528

**Ensembl:** ENSG00000100811

**String:** [9606.ENSP00000262238](#)

**Molecular Weight:** Observed MW: 60 kDa, 75 kDa

**Buffer:** PBS, pH 7.3, with 0.02% sodium azide and 50% glycerol.

**Concentration:** 2 mg/ml

**Note:** THIS PRODUCT IS FOR RESEARCH USE ONLY. NOT FOR USE IN DIAGNOSTIC, THERAPEUTIC OR COSMETIC PROCEDURES. NOT FOR HUMAN OR ANIMAL CONSUMPTION.