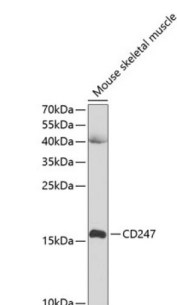
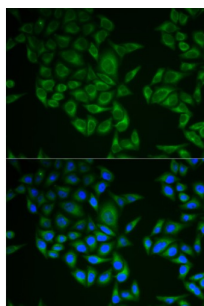


T-Cell Surface Glycoprotein CD3 Zeta Chain (CD247) Antibody

Catalogue No.: abx001675



Western blot analysis of extracts of Mouse skeletal muscle using CD247 Antibody (1/1000 dilution).



Immunofluorescence analysis of A549 cells using CD247 Antibody

CD247 Antibody is a Rabbit Polyclonal antibody against CD247. The protein encoded by this gene is T-cell receptor zeta, which together with T-cell receptor alpha/beta and gamma/delta heterodimers, and with CD3-gamma, -delta and -epsilon, forms the T-cell receptor-CD3 complex. The zeta chain plays an important role in coupling antigen recognition to several intracellular signal-transduction pathways. Low expression of the antigen results in impaired immune response. Two alternatively spliced transcript variants encoding distinct isoforms have been found for this gene. [provided by RefSeq, Jul 2008].

Target: T-Cell Surface Glycoprotein CD3 Zeta Chain (CD247)

Clonality: Polyclonal

Reactivity: Human, Mouse, Rat

Tested Applications: WB, IF/ICC

Host: Rabbit

Recommended dilutions: WB: 1/500 - 1/2000, IF/ICC: 1/50 - 1/200. Optimal dilutions/concentrations should be determined by the end user.

Conjugation: Unconjugated

Immunogen: Recombinant fusion protein corresponding to human CD247

Isotype: IgG

Datasheet

Version: 5.0.0

Revision date: 25 Aug 2025



Form:	Liquid
Purification:	Purified by affinity chromatography.
Storage:	Aliquot and store at -20°C. Avoid repeated freeze/thaw cycles.
UniProt Primary AC:	P20963 (UniProt , ExPASy)
Gene Symbol:	CD247
GeneID:	919
NCBI Accession:	NP_932170.1
Molecular Weight:	Calculated MW: 18 kDa Observed MW: 17 kDa
Buffer:	PBS, pH 7.3, containing 0.02% sodium azide, 50% glycerol.
Concentration:	1 mg/ml
Note:	THIS PRODUCT IS FOR RESEARCH USE ONLY. NOT FOR USE IN DIAGNOSTIC, THERAPEUTIC OR COSMETIC PROCEDURES. NOT FOR HUMAN OR ANIMAL CONSUMPTION.

For Reference Only