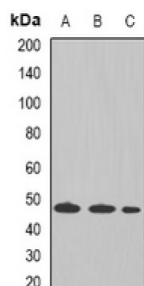
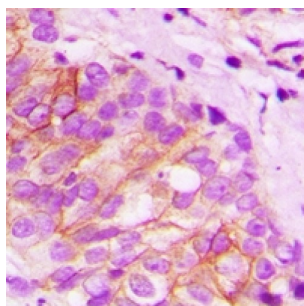


## Tapasin (TAPBP) Antibody

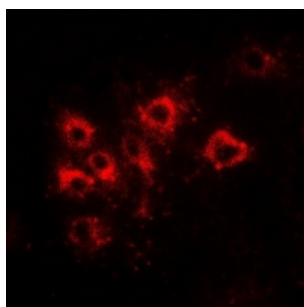
Catalogue No.: abx142257



Western blot analysis of Tapasin expression in (A) THP1, (B) Raji, and (C) mouse liver whole cell lysates.



Immunohistochemical analysis of Tapasin staining in human breast cancer formalin-fixed paraffin-embedded tissue section. The section was pre-treated using heat mediated antigen retrieval with sodium citrate buffer (pH 6.0). The section was then incubated with the antibody at room temperature and detected using an HRP-conjugated compact polymer system. DAB was used as the chromogen. The section was then counterstained with haematoxylin and mounted with DPX.



Immunofluorescent analysis of Tapasin staining in Hela cells. Formalin-fixed cells were permeabilized with 0.1% Triton X-100 in TBS for 5-10 minutes and blocked with 3% BSA-PBS for 30 minutes at room temperature. Cells were probed with the primary antibody in 3% BSA-PBS and incubated overnight at 4 °C in a humidified chamber. Cells were washed with PBST and incubated with a DL 594-conjugated secondary antibody (red) in PBS at room temperature in the dark.

Tapasin Antibody is a Rabbit Polyclonal against Tapasin.

**Target:** Tapasin (TAPBP)

**Clonality:** Polyclonal

**Reactivity:** Human, Mouse

**Tested Applications:** WB, IHC, IF/ICC

**Host:** Rabbit

**Recommended dilutions:** WB: 1/500 - 1/2000, IHC: 1/50 - 1/200, IF/ICC: 1/10 - 1/100. Optimal dilutions/concentrations should be determined by the end user.

**Immunogen:** Recombinant full length protein corresponding to human Tapasin.

# Datasheet

Version: 6.0.0  
Revision date: 18 Sep 2025



Isotype:	IgG
Form:	Liquid
Purification:	Purified by immunogen affinity chromatography.
Storage:	Aliquot and store at -20°C. Avoid repeated freeze/thaw cycles.
UniProt Primary AC:	O15533 ( <a href="#">UniProt</a> , <a href="#">ExPASy</a> ) Q9R233 ( <a href="#">UniProt</a> , <a href="#">ExPASy</a> )
Gene Symbol:	TAPBP
GeneID:	<a href="#">6892</a> <a href="#">21356</a>
OMIM:	<a href="#">601962</a>
HGNC:	11566
KEGG:	hsa:6892
Ensembl:	ENSG00000231925
String:	<a href="#">9606.ENSP00000404833</a>
Buffer:	0.42% Potassium phosphate, 0.87% Sodium chloride, pH 7.3, 30% glycerol and 0.01% sodium azide.
Specificity:	Recognizes endogenous levels of Tapasin protein.
Concentration:	1 mg/ml
Note:	THIS PRODUCT IS FOR RESEARCH USE ONLY. NOT FOR USE IN DIAGNOSTIC, THERAPEUTIC OR COSMETIC PROCEDURES. NOT FOR HUMAN OR ANIMAL CONSUMPTION.