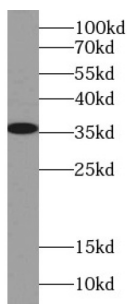
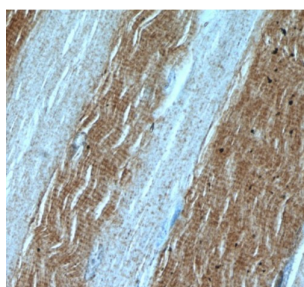


Lactate Dehydrogenase A (LDHA) Antibody

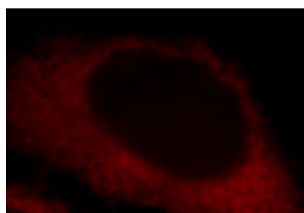
Catalogue No.: abx234735



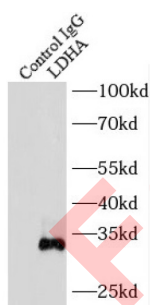
WB analysis of HeLa cells, using LDHA antibody (1/500 dilution).



IHC-P analysis of human skeletal muscle tissue, using LDHA antibody (1/50 dilution).



IF analysis of HepG2 cells, using LDHA antibody (1/25 dilution) and Rhodamine-conjugated goat anti-rabbit IgG (red).



IP analysis of HEK-293 cell lysate (2000 µg), using LDHA antibody (4 µg, detection: 1/500 dilution).

LDHA Antibody is a Rabbit Polyclonal against LDHA. Lactate dehydrogenase (LDH) is composed of A subunits predominate in skeletal muscle and B subunits are abundantly produced in brain and heart. The LDHA (lactate dehydrogenase A) and COPB1 (coatomer protein complex, subunit beta 1) genes, are involved in energy metabolism and protein transport processes.

Target: Lactate Dehydrogenase A (LDHA)

Clonality: Polyclonal

Datasheet

Version: 4.0.0
Revision date: 30 Jun 2025



Reactivity:	Human, Mouse, Rat
Tested Applications:	ELISA, WB, IHC, IF/ICC, IP
Host:	Rabbit
Recommended dilutions:	WB: 1/500 - 1/5000, IHC: 1/20 - 1/200, IF/ICC: 1/10 - 1/100, IP: 1/200 - 1/2000. Optimal dilutions/concentrations should be determined by the end user.
Conjugation:	Unconjugated
Immunogen:	Lactate dehydrogenase A.
Isotype:	IgG
Form:	Liquid
Purity:	≥ 95% (SDS-PAGE)
Purification:	Purified by immunogen affinity chromatography.
Storage:	Aliquot and store at -20°C. Avoid repeated freeze/thaw cycles.
Validity:	12 months.
UniProt Primary AC:	P00338 (UniProt , ExPASy)
KEGG:	hsa:3939
String:	9606.ENSP00000445175
Molecular Weight:	Observed MW: 32-36 kDa
Buffer:	PBS, pH 7.3, with 0.02% sodium azide and 50% glycerol.
Concentration:	2 mg/ml
Note:	THIS PRODUCT IS FOR RESEARCH USE ONLY. NOT FOR USE IN DIAGNOSTIC, THERAPEUTIC OR COSMETIC PROCEDURES. NOT FOR HUMAN OR ANIMAL CONSUMPTION.