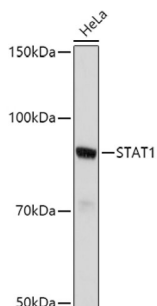
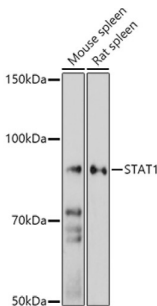


Signal Transducer And Activator of Transcription 1 (STAT1) Antibody

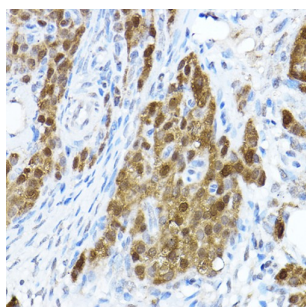
Catalogue No.: abx126656



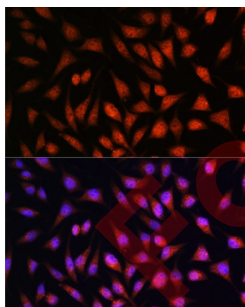
Western blot analysis of lysates from HeLa cells, using STAT1 Antibody at 1/500 dilution. Secondary antibody: HRP-conjugated Goat anti-Rabbit IgG (H+L) at 1/10000 dilution. Lysates/proteins: 25 µg per lane. Blocking buffer: 3% nonfat dry milk in TBST. Exposure time: 30s.



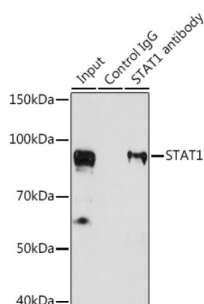
Western blot analysis of various lysates using STAT1 Antibody at 1/500 dilution. Secondary antibody: HRP-conjugated Goat anti-Rabbit IgG (H+L) at 1/10000 dilution. Lysates/proteins: 25 µg per lane. Blocking buffer: 3% nonfat dry milk in TBST. Exposure time: 180s.



Immunohistochemistry analysis of paraffin-embedded Rat ovary using STAT1 Antibody at dilution of 1/100 (40x lens). High pressure antigen retrieval performed in 0.01 M Citrate buffer (pH 6.0) prior to IHC staining.



Immunofluorescence analysis of L929 cells using STAT1 Antibody at dilution of 1/100. Secondary antibody: Cy3-conjugated Goat anti-Rabbit IgG (H+L) at 1/500 dilution. Blue: DAPI for nuclear staining.

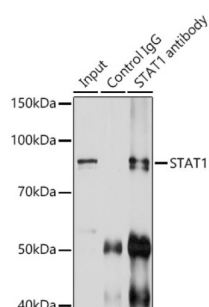


Immunoprecipitation analysis of 200 µg extracts of U-87MG cells using 3 µg STAT1 antibody. Western blot was performed from the immunoprecipitate using STAT1 antibody at a dilution of 1/1000.

Datasheet

Version: 4.0.0

Revision date: 15 Aug 2025



Immunoprecipitation analysis of 200 µg extracts of U-87MG cells using 3 µg STAT1 Antibody. Western blot was performed from the immunoprecipitate using STAT1 Antibody at a dilution of 1/500.

STAT1 Antibody is a Rabbit Polyclonal against STAT1.

Target:	Signal Transducer And Activator of Transcription 1 (STAT1)
Clonality:	Polyclonal
Reactivity:	Human, Mouse, Rat
Tested Applications:	ELISA, WB, IHC, IF/ICC, IP
Host:	Rabbit
Recommended dilutions:	ELISA: 1 µg/ml, WB: 1/500 - 1/1000, IHC-P: 1/50 - 1/200, IF/ICC: 1/50 - 1/200, IP: 0.5 µg - 4 µg antibody per 200 µg - 400 µg extracts of whole cells. Not tested in IHC-F. Optimal dilutions/concentrations should be determined by the end user.
Conjugation:	Unconjugated
Immunogen:	A synthetic peptide corresponding to a sequence within amino acids 650-750 of human STAT1.
Isotype:	IgG
Form:	Liquid
Purification:	Purified by affinity chromatography.
Storage:	Aliquot and store at -20°C. Avoid repeated freeze/thaw cycles.
UniProt Primary AC:	P42224 (UniProt , ExPASy)
Gene Symbol:	STAT1
GeneID:	6772
NCBI Accession:	NP_009330.1

Datasheet

Version: 4.0.0

Revision date: 15 Aug 2025



Molecular Weight: Calculated MW: 87 kDa
Observed MW: 91 kDa

Buffer: PBS, pH 7.3, containing 0.01% thimerosal, 50% glycerol.

Concentration: > 0.2 mg/ml

Note: THIS PRODUCT IS FOR RESEARCH USE ONLY. NOT FOR USE IN DIAGNOSTIC, THERAPEUTIC OR COSMETIC PROCEDURES. NOT FOR HUMAN OR ANIMAL CONSUMPTION.

For Reference Only