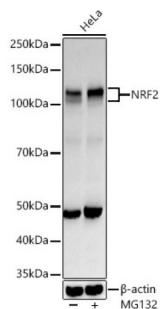
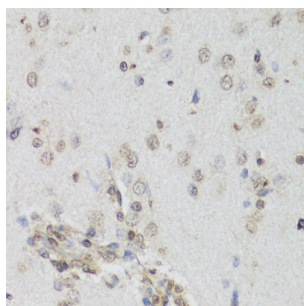


## Nuclear Factor, Erythroid Derived 2 Like 2 (NFE2L2) Antibody

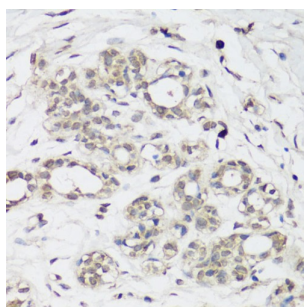
Catalogue No.: abx126236



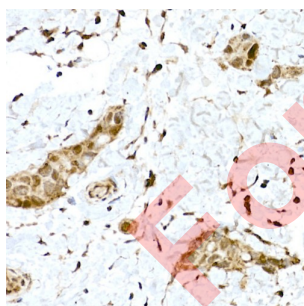
Western blot analysis of various lysates using NRF2 Antibody at ARC50393-02 dilution. HeLa cells were treated by MG132 (50  $\mu$ M) at 37°C for 90 minutes.



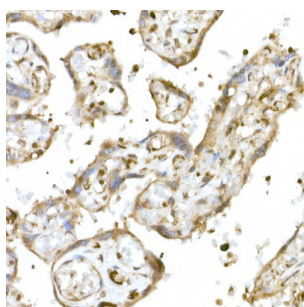
Western blot analysis of various lysates using NRF2 Antibody at ARC50393-02 dilution. NIH3T3 cells were treated by MG132 (50  $\mu$ M) at 37°C for 90 minutes.



Western blot analysis of various lysates using NRF2 antibody at dilution. C6 cells were treated by MG132 (50  $\mu$ M) at 37°C for 90 minutes.



Immunohistochemistry of paraffin-embedded human breast cancer using NRF2 antibody (1/100 dilution, 40x lens). High pressure antigen retrieval was performed in 10 mM citrate buffer pH 6.0 before commencing with IHC staining protocol.



Immunohistochemistry of paraffin-embedded human placenta using NRF2 antibody (1/100 dilution, 40x lens). High pressure antigen retrieval was performed in 10 mM citrate buffer pH 6.0 before commencing with IHC staining protocol.

# Datasheet

Version: 4.0.0  
Revision date: 18 Mar 2025



NFE2L2 Antibody is a Rabbit Polyclonal against NFE2L2.

<b>Target:</b>	Nuclear Factor, Erythroid Derived 2 Like 2 (NFE2L2)
<b>Clonality:</b>	Polyclonal
<b>Reactivity:</b>	Human, Mouse, Rat
<b>Tested Applications:</b>	WB, IHC
<b>Host:</b>	Rabbit
<b>Recommended dilutions:</b>	WB: 1/500 - 1/2000, IHC-P: 1/50 - 1/200. Not tested in IHC-F. Optimal dilutions/concentrations should be determined by the end user.
<b>Conjugation:</b>	Unconjugated
<b>Immunogen:</b>	Recombinant fusion protein corresponding to human NRF2
<b>Isotype:</b>	IgG
<b>Form:</b>	Liquid
<b>Purification:</b>	Purified by affinity chromatography.
<b>Storage:</b>	Aliquot and store at -20°C. Avoid repeated freeze/thaw cycles.
<b>UniProt Primary AC:</b>	Q16236 ( <a href="#">UniProt</a> , <a href="#">ExPASy</a> )
<b>Gene Symbol:</b>	NFE2L2
<b>GeneID:</b>	<a href="#">4780</a>
<b>NCBI Accession:</b>	NP_006155.2
<b>KEGG:</b>	hsa:4780
<b>String:</b>	<a href="#">9606.ENSP00000380252</a>
<b>Molecular Weight:</b>	Calculated MW: 65 kDa/66 kDa/67 kDa Observed MW: 97-100 kDa
<b>Buffer:</b>	PBS, pH 7.3, containing 0.05% BSA, 0.05% Proclin-300, 50% glycerol.
<b>Concentration:</b>	1 mg/ml

# Datasheet

Version: 4.0.0

Revision date: 18 Mar 2025



**Note:**

THIS PRODUCT IS FOR RESEARCH USE ONLY. NOT FOR USE IN DIAGNOSTIC, THERAPEUTIC OR COSMETIC PROCEDURES. NOT FOR HUMAN OR ANIMAL CONSUMPTION.

For Reference Only