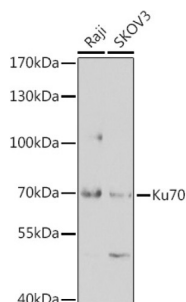
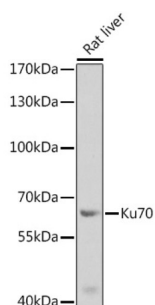


X-Ray Repair Cross Complementing 6 (XRCC6) Antibody

Catalogue No.: abx001691



Western blot analysis of extracts of various cell lines using Ku70 Antibody (1/1000 dilution).



Western blot analysis of extracts of rat liver using Ku70 Antibody (1/1000 dilution).

XRCC6 Antibody is a Rabbit Polyclonal antibody against XRCC6. The p70/p80 autoantigen is a nuclear complex consisting of two subunits with molecular masses of approximately 70 and 80 kDa. The complex functions as a single-stranded DNA-dependent ATP-dependent helicase. The complex may be involved in the repair of nonhomologous DNA ends such as that required for double-strand break repair, transposition, and V(D)J recombination. High levels of autoantibodies to p70 and p80 have been found in some patients with systemic lupus erythematosus.

Target: X-Ray Repair Cross Complementing 6 (XRCC6)

Clonality: Polyclonal

Reactivity: Human, Mouse, Rat

Tested Applications: WB, IHC

Host: Rabbit

Recommended dilutions: WB: 1/500 - 1/2000, IHC-P: 1/50 - 1/200. Not tested in IHC-F. Optimal dilutions/concentrations should be determined by the end user.

Conjugation: Unconjugated

Immunogen: Recombinant fusion protein corresponding to human KU70

Isotype: IgG

Datasheet

Version: 4.0.0

Revision date: 29 Aug 2025



Form:	Liquid
Purification:	Purified by affinity chromatography.
Storage:	Aliquot and store at -20°C. Avoid repeated freeze/thaw cycles.
UniProt Primary AC:	P12956 (UniProt , ExPASy)
Gene Symbol:	XRCC6
GeneID:	2547
NCBI Accession:	NP_001460.1
KEGG:	hsa:2547
String:	9606.ENSP00000352257
Molecular Weight:	Calculated MW: 65 kDa/69 kDa Observed MW: 68 kDa
Buffer:	PBS, pH 7.3, containing 0.02% sodium azide, 50% glycerol.
Concentration:	1 mg/ml
Note:	THIS PRODUCT IS FOR RESEARCH USE ONLY. NOT FOR USE IN DIAGNOSTIC, THERAPEUTIC OR COSMETIC PROCEDURES. NOT FOR HUMAN OR ANIMAL CONSUMPTION.