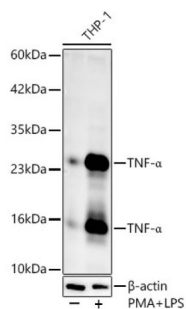
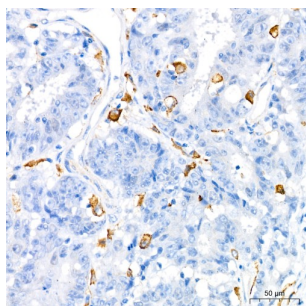


## Tumor Necrosis Factor (TNF) Antibody

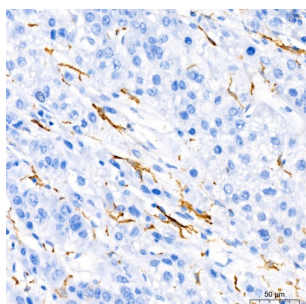
Catalogue No.: abx126717



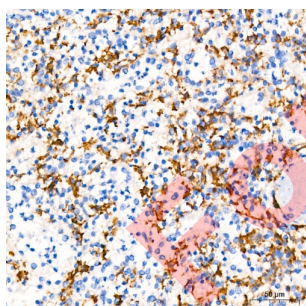
WB analysis of THP-1 cells (25 µg per lane, treated with 80 nM PMA/TPA at 37°C overnight and LPS, 1 µg/ml at 37°C for 6 hours), using Tumor Necrosis Factor (TNF) antibody (1/1000 dilution) and [abx005548](#) - HRP-conjugated Goat anti-Rabbit IgG H&L antibody (1/10000 dilution).



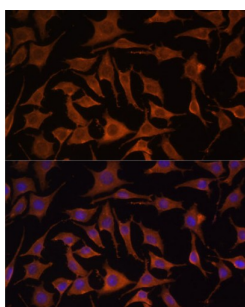
IHC-P analysis of Human colon carcinoma tissue using Tumor Necrosis Factor (TNF) antibody (1/1000 dilution, 40x lens).



IHC-P analysis of Human liver tissue using Tumor Necrosis Factor (TNF) antibody (1/1000 dilution, 40x lens).



IHC-P analysis of Human spleen tissue using Tumor Necrosis Factor (TNF) antibody (1/1000 dilution, 40x lens).



IF analysis of L929 cells using Tumor Necrosis Factor (TNF) antibody (1/100 dilution) and [abx005541](#) - Cyanine 3-conjugated Goat anti-Rabbit IgG H&L antibody (1/500 dilution). DAPI was used as a nuclear stain (blue).

Tumor Necrosis Factor (TNF) Antibody is a Rabbit polyclonal against Tumor Necrosis Factor (TNF).

Tumor Necrosis Factor (TNF) is a multifunctional proinflammatory cytokine that belongs to the Tumor Necrosis Factor (TNF) superfamily. It is mainly secreted by macrophages and functions through its receptors TNFRSF1A/TNFR1 and TNFRSF1B/TNFR. TNF is involved in the regulation of a wide spectrum of biological processes including cell proliferation, differentiation, apoptosis, lipid metabolism, and coagulation and has been implicated in a variety of diseases, including autoimmune disease, insulin resistance, psoriasis, rheumatoid arthritis ankylosing spondylitis, tuberculosis, autosomal dominant polycystic kidney disease, and cancer. Mutations in the TNF gene are linked to susceptibility to cerebral malaria, septic shock, and Alzheimer's disease.

<b>Target:</b>	Tumor Necrosis Factor (TNF)
<b>Research Area:</b>	Cytokines, Tumor Immunity, Infection Immunity
<b>Clonality:</b>	Polyclonal
<b>Reactivity:</b>	Human, Mouse, Rat
<b>Tested Applications:</b>	ELISA, WB, IHC, IF/ICC
<b>Host:</b>	Rabbit
<b>Recommended dilutions:</b>	ELISA: 1 µg/ml, WB: 1/500 - 1/2000, IHC-P: 1/500 - 1/1000, IF/ICC: 1/50 - 1/100. Not tested in IHC-F. Optimal dilutions/concentrations should be determined by the end user.
<b>Conjugation:</b>	Unconjugated
<b>Immunogen:</b>	Recombinant protein corresponding to TNF. The exact sequence is proprietary.
<b>Isotype:</b>	IgG
<b>Form:</b>	Liquid
<b>Purification:</b>	Purified by affinity chromatography.
<b>Storage:</b>	Aliquot and store at -20°C. Avoid repeated freeze/thaw cycles.
<b>UniProt Primary AC:</b>	P01375 ( <a href="#">UniProt</a> , <a href="#">ExPASy</a> )
<b>Gene Symbol:</b>	TNF
<b>GeneID:</b>	<a href="#">7124</a>
<b>OMIM:</b>	<a href="#">191160</a>
<b>NCBI Accession:</b>	NP_000585.2

# Datasheet

Version: 7.0.0

Revision date: 12 Oct 2025



**HGNC:** 11892

**KEGG:** hsa:7124

**Ensembl:** ENSG00000232810

**String:** [9606.ENSP00000398698](#)

**Molecular Weight:** Calculated MW: 26 kDa  
Observed MW: 18 kDa, 25 kDa

**Buffer:** PBS, pH 7.3, containing 0.09% sodium azide, 50% glycerol.

**Concentration:** 1.84 mg/ml

**Note:** THIS PRODUCT IS FOR RESEARCH USE ONLY. NOT FOR USE IN DIAGNOSTIC, THERAPEUTIC OR COSMETIC PROCEDURES. NOT FOR HUMAN OR ANIMAL CONSUMPTION.

For Reference Only