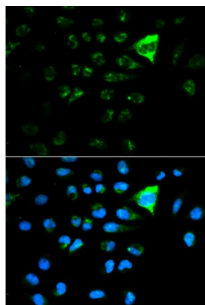
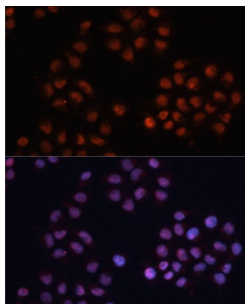


Cyclin Dependent Kinase Inhibitor 1A (CDKN1A) Antibody

Catalogue No.: abx125658



Immunohistochemistry analysis of paraffin-embedded Mouse liver tissue using CDKN1A/p21CIP1 Antibody at a dilution of 1/100 (40x lens). Microwave antigen retrieval was performed in 0.01 M PBS buffer (pH 7.2±0.2) prior to IHC staining.



Immunohistochemistry analysis of paraffin-embedded Mouse brain tissue using CDKN1A/p21CIP1 Antibody at a dilution of 1/100 (40x lens). Microwave antigen retrieval was performed in 0.01 M PBS buffer (pH 7.2±0.2) prior to IHC staining.

CDKN1A Antibody is a Rabbit Polyclonal against CDKN1A.

Target:	Cyclin Dependent Kinase Inhibitor 1A (CDKN1A)
Clonality:	Polyclonal
Reactivity:	Mouse, Rat
Tested Applications:	ELISA, IHC
Host:	Rabbit
Recommended dilutions:	ELISA: 1 µg/ml, IHC-P: 1/50 - 1/200. Not tested in IHC-F. Optimal dilutions/concentrations should be determined by the end user.
Conjugation:	Unconjugated
Immunogen:	Recombinant fusion protein containing a sequence corresponding to amino acids 1-164 of human CDKN1A/p21CIP1.
Isotype:	IgG
Form:	Liquid
Purification:	Purified by affinity chromatography.

Datasheet

Version: 4.0.0
Revision date: 22 Jul 2025



Storage: Aliquot and store at -20°C. Avoid repeated freeze/thaw cycles.

UniProt Primary AC: P38936 ([UniProt](#), [ExPASy](#))

Gene Symbol: CDKN1A

GeneID: [1026](#)

NCBI Accession: NP_001207707.1

KEGG: hsa:1026

String: [9606.ENSP00000384849](#)

Molecular Weight: Calculated MW: 18 kDa
Observed MW: 21 kDa

Buffer: PBS, pH 7.3, containing 0.05% Proclin-300, 50% glycerol.

Concentration: > 0.2 mg/ml

Note: THIS PRODUCT IS FOR RESEARCH USE ONLY. NOT FOR USE IN DIAGNOSTIC, THERAPEUTIC OR COSMETIC PROCEDURES. NOT FOR HUMAN OR ANIMAL CONSUMPTION.

For Reference Only