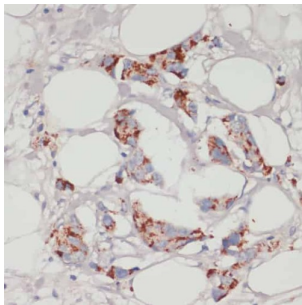
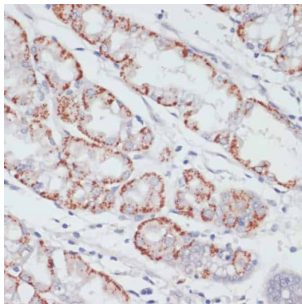


Acyl-CoA Synthetase Long-Chain Family Member 3 (ACSL3) Antibody

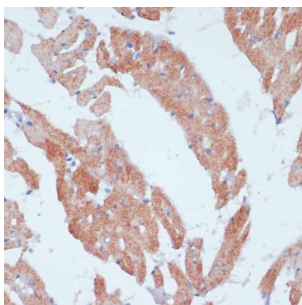
Catalogue No.: abx125487



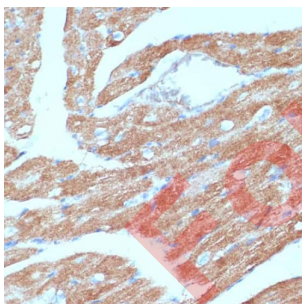
Immunohistochemistry of paraffin-embedded Human mammary cancer using ACSL3 Antibody (1/100 dilution, 40x lens).



Immunohistochemistry of paraffin-embedded Human stomach using ACSL3 Antibody (1/100 dilution, 40x lens).



Immunohistochemistry of paraffin-embedded Rat heart using ACSL3 Antibody (1/100 dilution, 40x lens).



Immunohistochemistry of paraffin-embedded Mouse heart using ACSL3 Antibody (1/100 dilution, 40x lens).

ACSL3 Antibody is a Rabbit Polyclonal against ACSL3.

Target: Acyl-CoA Synthetase Long-Chain Family Member 3 (ACSL3)

Clonality: Polyclonal

Reactivity: Human, Mouse, Rat

Datasheet

Version: 2.0.0
Revision date: 14 May 2025



Tested Applications:	IHC
Host:	Rabbit
Recommended dilutions:	IHC-P: 1/50 - 1/200. Not tested in IHC-F. Optimal dilutions/concentrations should be determined by the end user.
Conjugation:	Unconjugated
Immunogen:	Recombinant fusion protein corresponding to human ACSL3
Isotype:	IgG
Form:	Liquid
Purification:	Purified by affinity chromatography.
Storage:	Aliquot and store at -20°C. Avoid repeated freeze/thaw cycles.
UniProt Primary AC:	O95573 (UniProt , ExPASy)
Gene Symbol:	ACSL3
GeneID:	2181
NCBI Accession:	NP_004448.2
KEGG:	hsa:2181
String:	9606.ENSP00000350012
Buffer:	PBS, pH 7.3, containing 0.02% sodium azide, 50% glycerol.
Concentration:	1 mg/ml
Note:	THIS PRODUCT IS FOR RESEARCH USE ONLY. NOT FOR USE IN DIAGNOSTIC, THERAPEUTIC OR COSMETIC PROCEDURES. NOT FOR HUMAN OR ANIMAL CONSUMPTION.