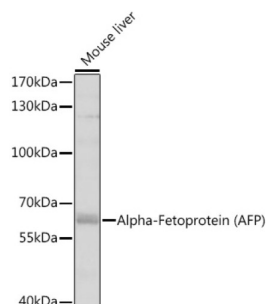
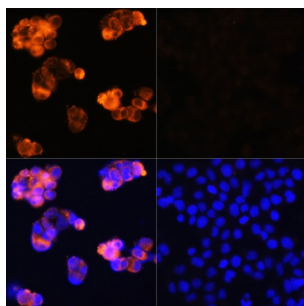


Alpha-Fetoprotein (AFP) Antibody

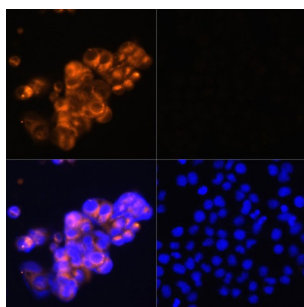
Catalogue No.: abx125498



Western blot analysis of lysates from mouse liver, using Alpha-Fetoprotein (AFP) Antibody at 1/1000 dilution. Secondary antibody: HRP-conjugated Goat anti-Rabbit IgG (H+L) at 1/10000 dilution. Lysates/proteins: 25 µg per lane. Blocking buffer: 3% nonfat dry milk in TBST. Exposure time: 60s.



Immunofluorescence analysis of HepG2 cells (upper left) and LO2 cells (negative sample control) (upper right) using Alpha-Fetoprotein (Alpha-Fetoprotein (AFP)) Antibody (red, A11013) at dilution of 1/100. Blue: DAPI for nuclear staining.



Immunofluorescence analysis of HepG2 cells (upper left) and LO2 cells (negative sample control) (upper right) using Alpha-Fetoprotein (Alpha-Fetoprotein (AFP)) Antibody (red, A17457) at dilution of 1/100. Blue: DAPI for nuclear staining.

AFP Antibody is a Rabbit Polyclonal against AFP.

Target: Alpha-Fetoprotein (AFP)

Clonality: Polyclonal

Reactivity: Human, Mouse

Tested Applications: ELISA, WB, IF/ICC

Host: Rabbit

Recommended dilutions: ELISA: 1 µg/ml, WB: 1/500 - 1/2000, IF/ICC: 1/50 - 1/200. Optimal dilutions/concentrations should be determined by the end user.

Conjugation: Unconjugated

Datasheet

Version: 3.0.0
Revision date: 09 May 2025



Immunogen:	Recombinant fusion protein containing a sequence corresponding to amino acids 450-550 of Alpha-Fetoprotein (AFP).
Isotype:	IgG
Form:	Liquid
Purification:	Purified by affinity chromatography.
Storage:	Aliquot and store at -20°C. Avoid repeated freeze/thaw cycles.
UniProt Primary AC:	P02771 (UniProt , ExPASy)
Gene Symbol:	AFP
GenelD:	174
NCBI Accession:	NP_001125.1
KEGG:	hsa:174
String:	9606.ENSP00000379138
Molecular Weight:	Calculated MW: 69 kDa Observed MW: 68 kDa
Buffer:	PBS, pH 7.3, containing 0.01% thimerosal, 50% glycerol.
Concentration:	> 0.2 mg/ml
Note:	THIS PRODUCT IS FOR RESEARCH USE ONLY. NOT FOR USE IN DIAGNOSTIC, THERAPEUTIC OR COSMETIC PROCEDURES. NOT FOR HUMAN OR ANIMAL CONSUMPTION.