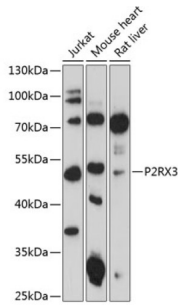


Datasheet

Version: 4.0.0
Revision date: 11 Aug 2025

Purinergic Receptor P2X 3 (P2RX3) Antibody

Catalogue No.: abx126305



Western blot analysis of extracts of various cell lines using P2RX3 Antibody (1/3000 dilution).

P2RX3 Antibody is a Rabbit Polyclonal against P2RX3.

Target: Purinergic Receptor P2X 3 (P2RX3)

Clonality: Polyclonal

Reactivity: Human, Mouse, Rat

Tested Applications: WB

Host: Rabbit

Recommended dilutions: WB: 1/500 - 1/1000. Optimal dilutions/concentrations should be determined by the end user.

Conjugation: Unconjugated

Immunogen: Recombinant fusion protein corresponding to human P2RX3

Isotype: IgG

Form: Liquid

Purification: Purified by affinity chromatography.

Storage: Aliquot and store at -20°C. Avoid repeated freeze/thaw cycles.

UniProt Primary AC: P56373 ([UniProt](#), [ExpASY](#))

Gene Symbol: P2RX3

GeneID: [5024](#)

Datasheet

Version: 4.0.0
Revision date: 11 Aug 2025



NCBI Accession: NP_002550.2

KEGG: hsa:5024

String: [9606.ENSP00000263314](#)

Molecular Weight: Calculated MW: 44 kDa
Observed MW: 44 kDa

Buffer: PBS, pH 7.3, containing 0.01% thiomersal, 50% glycerol.

Concentration: 1 mg/ml

Note: THIS PRODUCT IS FOR RESEARCH USE ONLY. NOT FOR USE IN DIAGNOSTIC, THERAPEUTIC OR COSMETIC PROCEDURES. NOT FOR HUMAN OR ANIMAL CONSUMPTION.

For Reference Only